

JEEP 2014 Carplay

- MODEL : HW Ver 00
- DATE : 2020.08.17



GU ELECTRONIC

Index

1. Main Spec
2. Block Diagram
3. Dimension
4. External Appearance
5. Connector Pin Assignment
6. Product Composition
7. DIP S/W Setting
8. Mode Change
9. Install Manual
10. Q & A

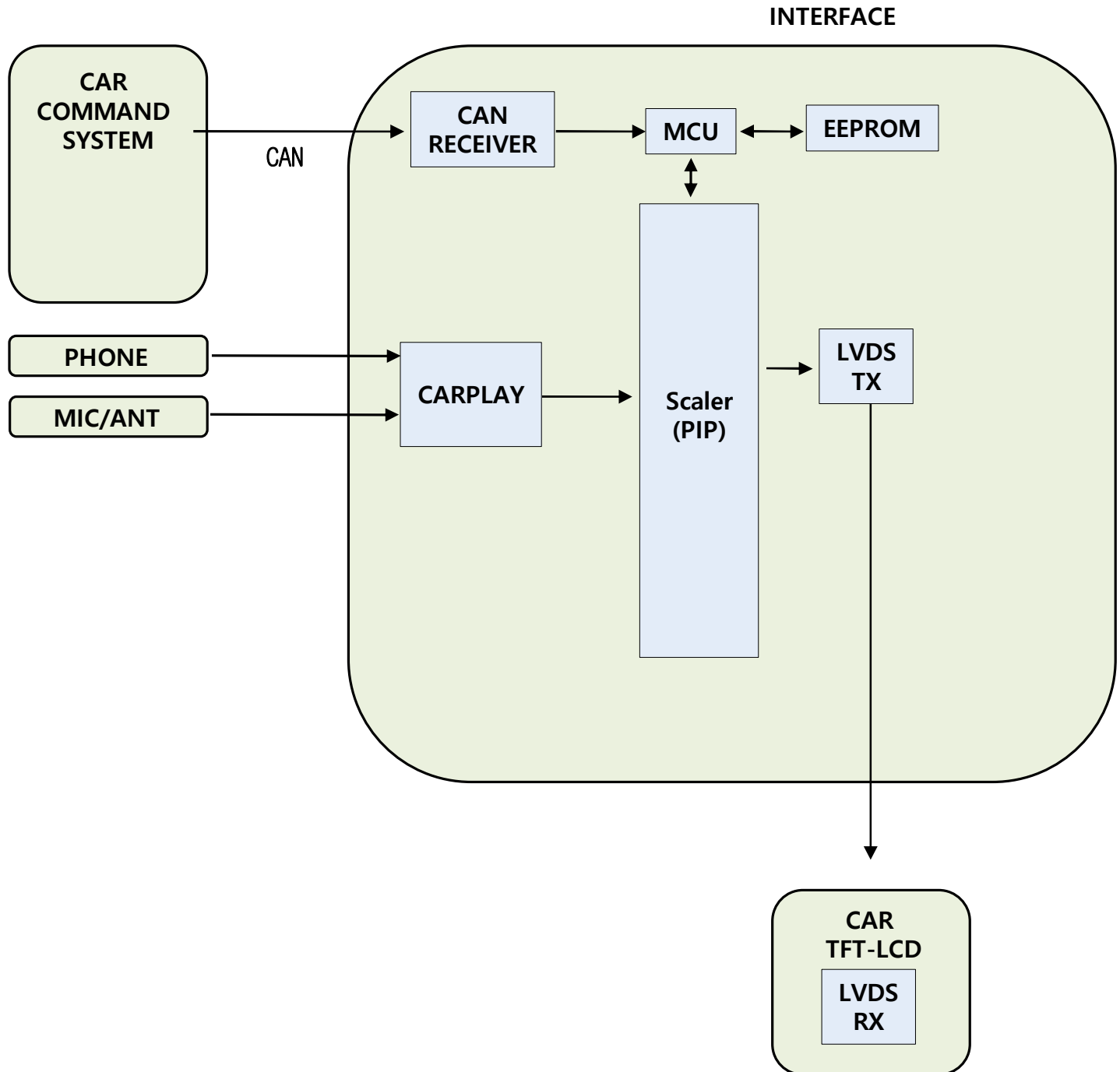


1. Main Spec.

1. Input Spec. (MULTI VIDEO INTERFACE)
 - 1 x Carplay Wireless / USB
 - 1 x LVDS Input. (Car Command System)
2. Output Spec.
 - 1 x LVDS Output (LCD Operation)
3. Power Spec.
 - Input Power : 8VDC ~ 24VDC
 - Consumption Power : 12Watt, Max
4. Switch Input mode
 - Possible to select CAR model while switching mode by DIP S/W
 - By button on the Commander in the car via CAN
5. Note: This product does not support front and rear cameras

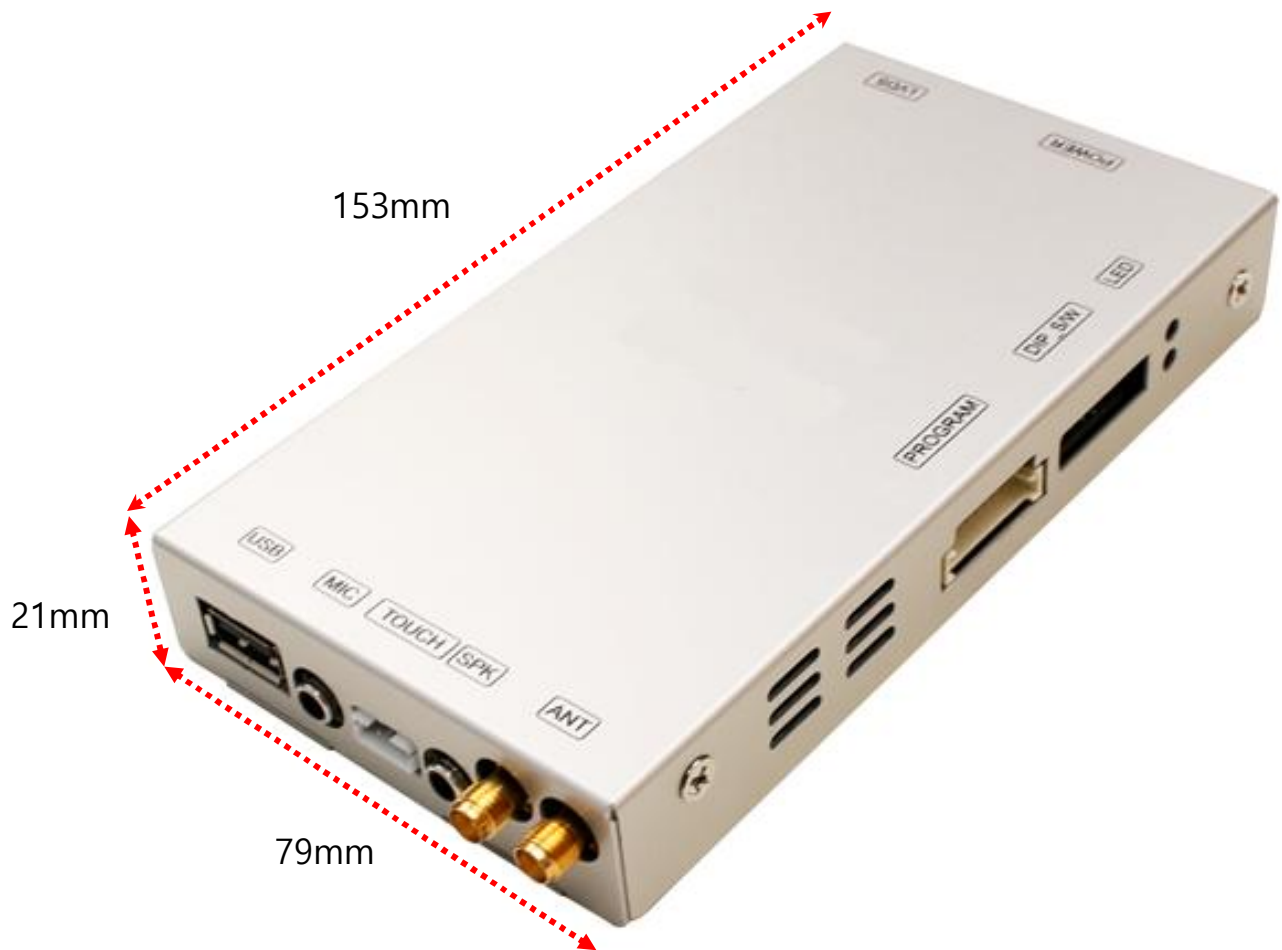


2. Block Diagram



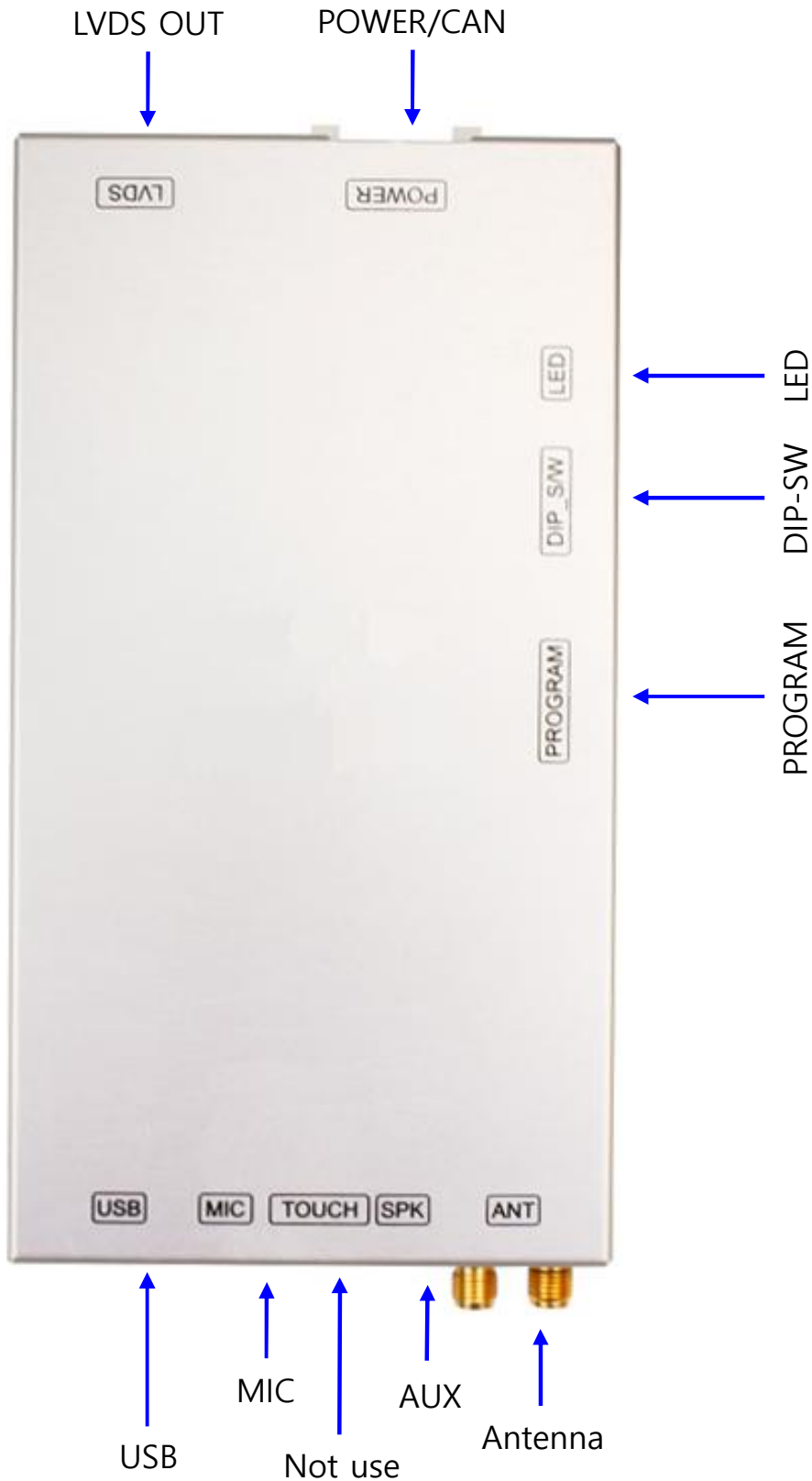
3. Dimension

153mm * 79mm * 21mm

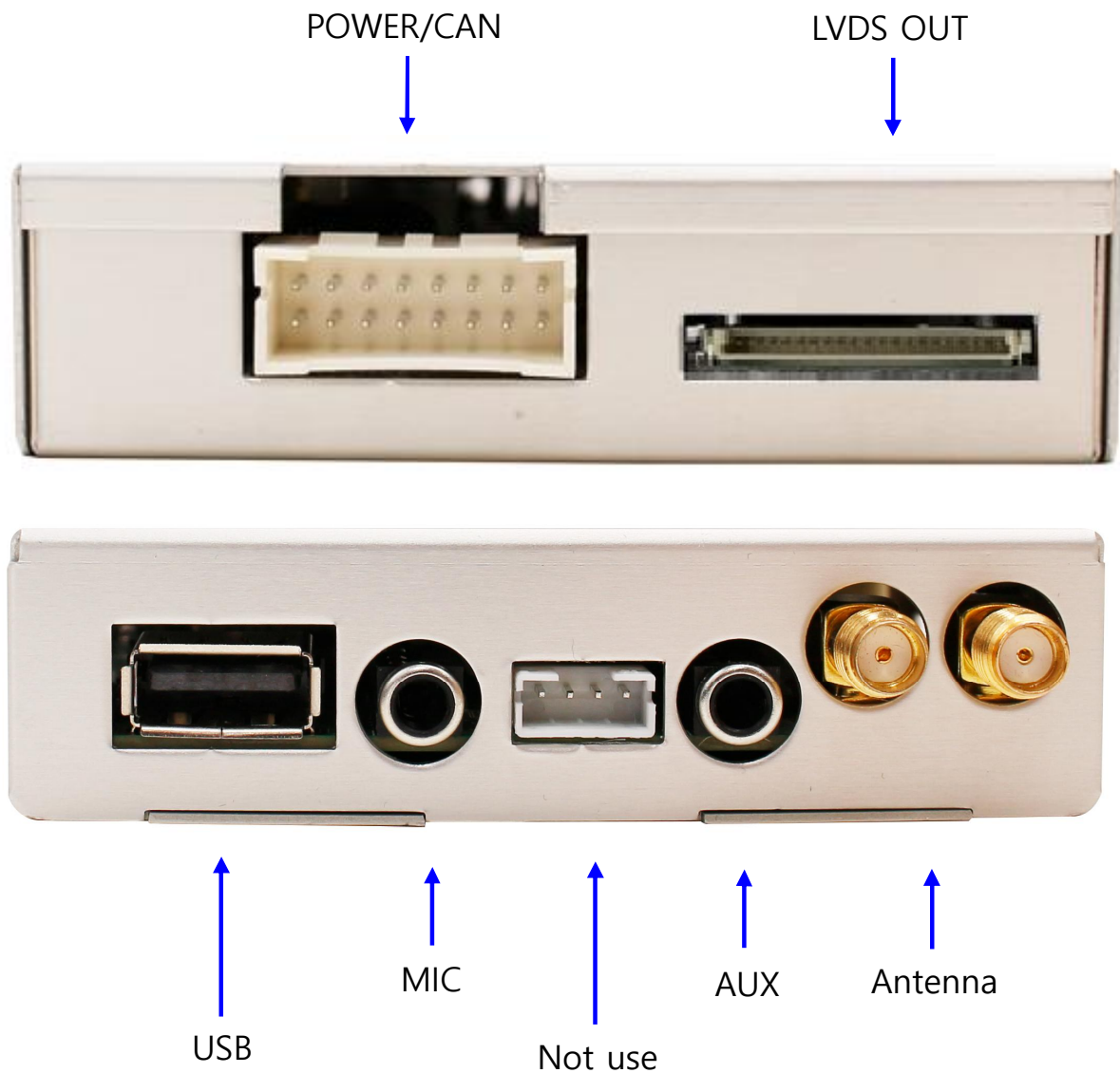


* This can change under manufacturer's circumstance

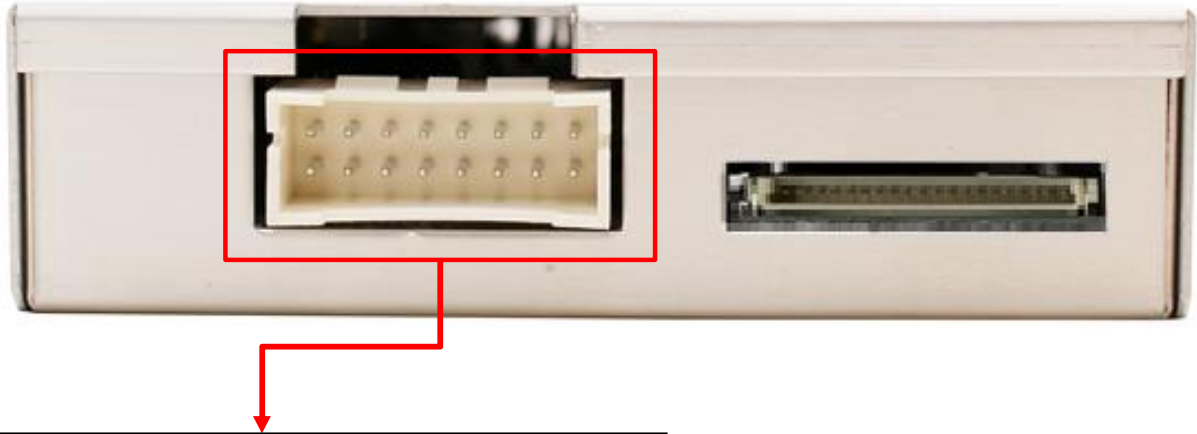
4. External Appearance



4. External Appearance



5. Connector Pin Assignment



*POWER Connect

1	Yellow	White	Green	Grey	White	Red	White	Black	15
2	Yellow	Blue	Orange	Purple	White	White	Green	Black	16

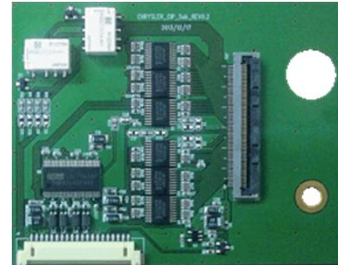
- | | |
|---------------------|------------------|
| 1. Battery (Yellow) | 9. N.C |
| 2. Battery (Yellow) | 10. N.C |
| 3. N.C | 11. ACC (Red) |
| 4. KEY1 (Blue) | 12. N.C |
| 5. CAN1-L (Green) | 13. N.C |
| 6. CAN1-H (Orange) | 14. Mode (Green) |
| 7. CAN2-L (White) | 15. GND (Black) |
| 8. CAN2-H (Purple) | 16. GND (Black) |



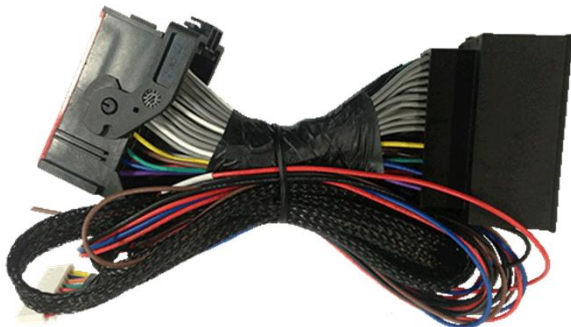
6. Product Composition



Interface 1 EA



SUB Board 1 EA



Power Cable 1 EA



Bluetooth / Wifi Antenna 2EA



FPC Cable 1 EA



LVDS Cable(800mm) 1 EA



Microphone 1 EA

7. DIP S/W Setting

* ON : DOWN , OFF : UP

PIN	FUNCTION	DIP S/W Selection
1	N.C	
2	N.C	
3	REAR TYPE	ON : OEM OFF : External
4	REAR DETECT	ON : Wire OFF : CAN
5	BACK button use.	ON : YES OFF : NO
6	Streeingwheel TEL / VOICE button use.	ON : YES OFF : NO
7	CAR type SEL	Right Picture
8		

* DIP S/W Example



Grand Cherokee (WK)
2016year 300C



Cherokee (KL)



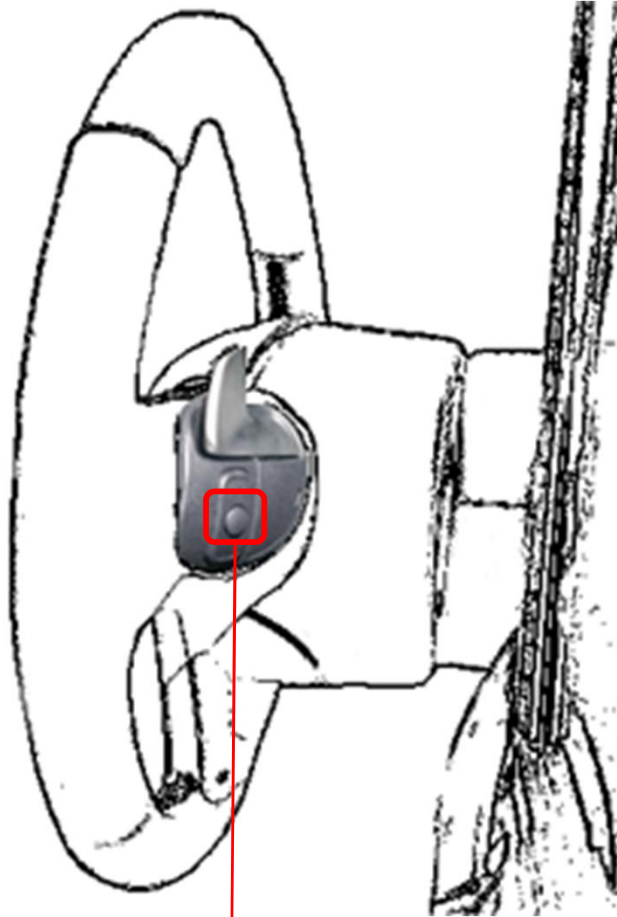
DODGE RAM 2014



DODGE RAM 2015



8. Mode Change



mode change : 1ms press

8. Mode Change



mode change : 0.7ms press

★ To use the Back button, DIP-SW 5 must be turned ON.

8. Mode Change

Vehicles Supported : Grand Cherokee



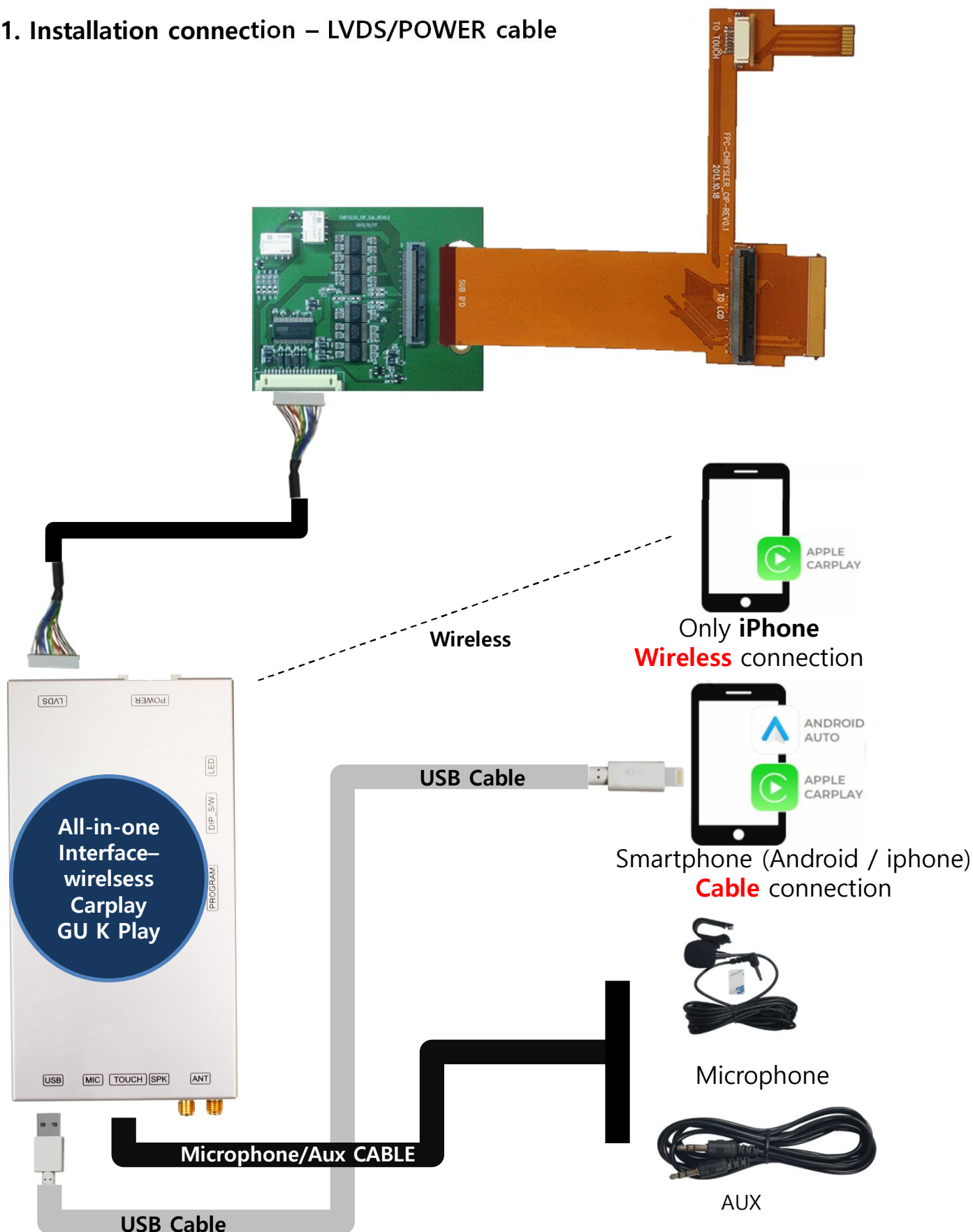
Carplay mode "SIRI"

Carplay mode "TEL ON"

★ To use the Steeringwheel TEL / VOICE,
DIP-SW 6 must be turned ON.

9. Install Manual

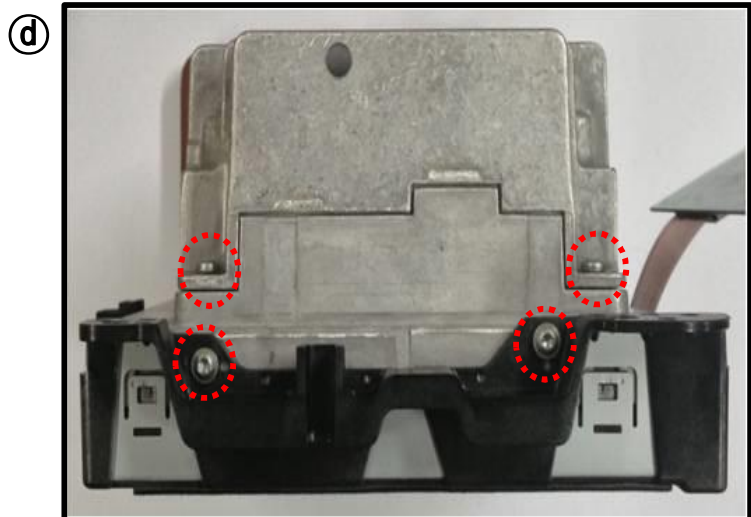
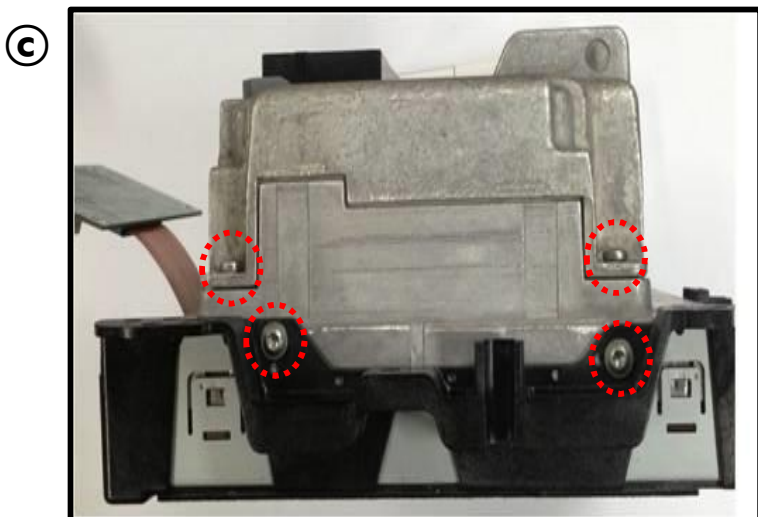
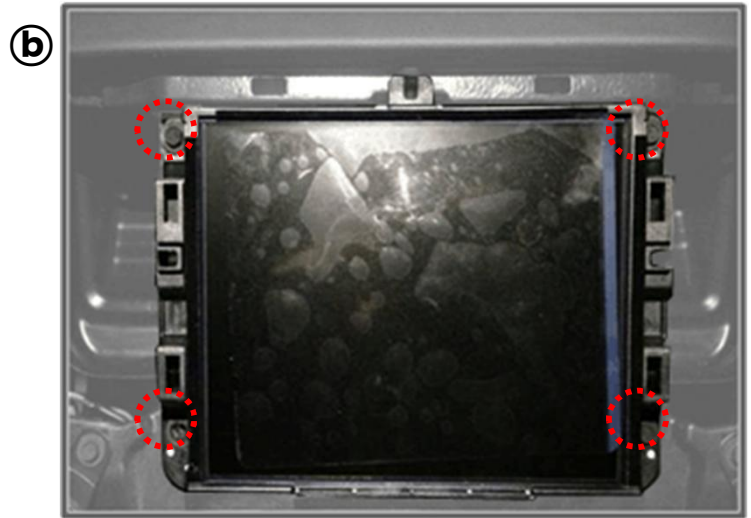
1. Installation connection – LVDS/POWER cable



GU Electronic

9. Install Manual

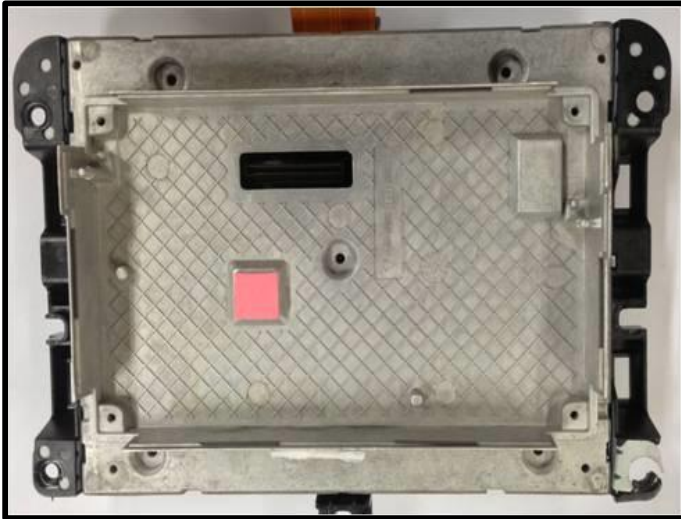
3. Installation



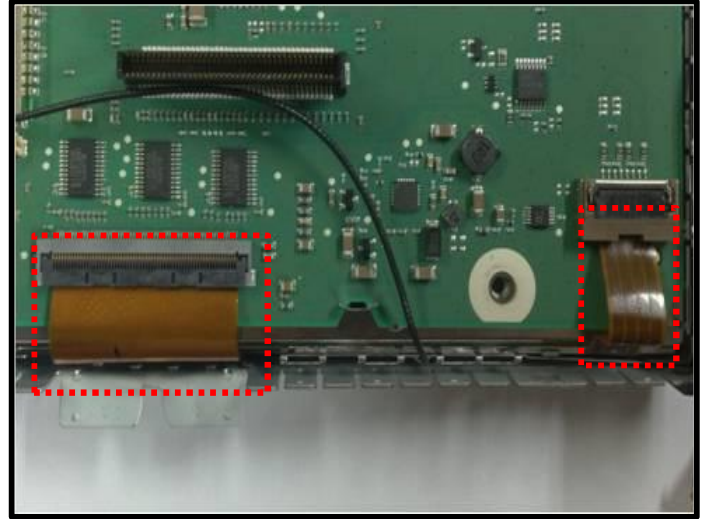
9. Install Manual

3. Installation

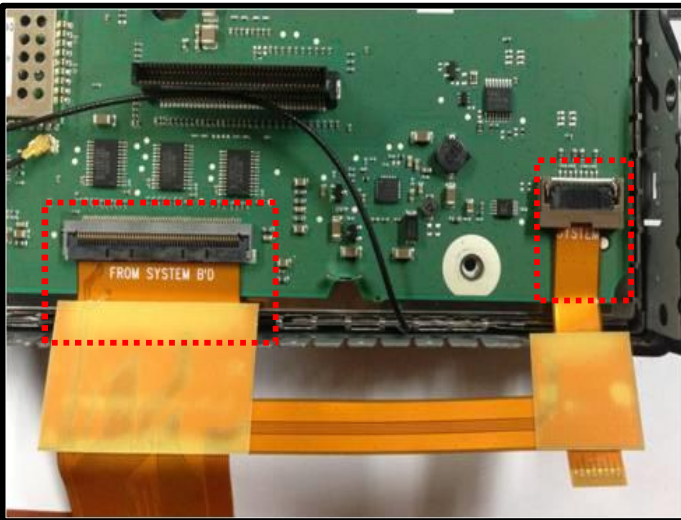
g



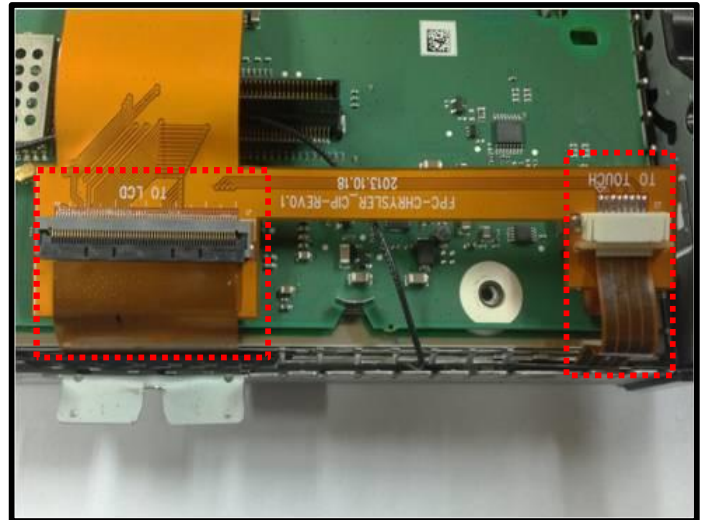
h



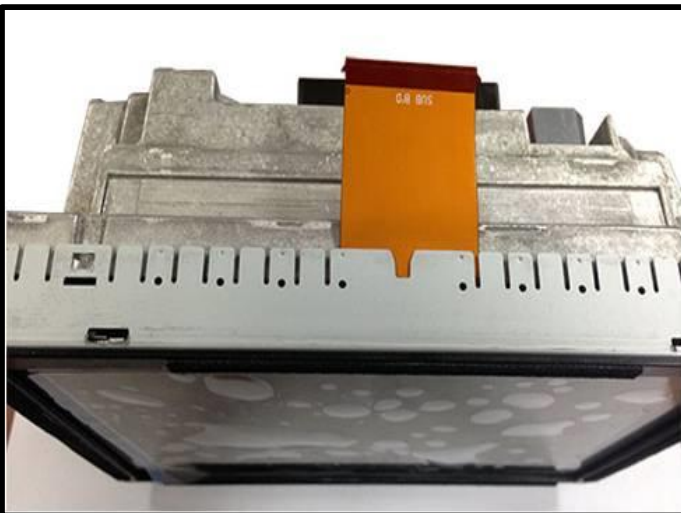
i



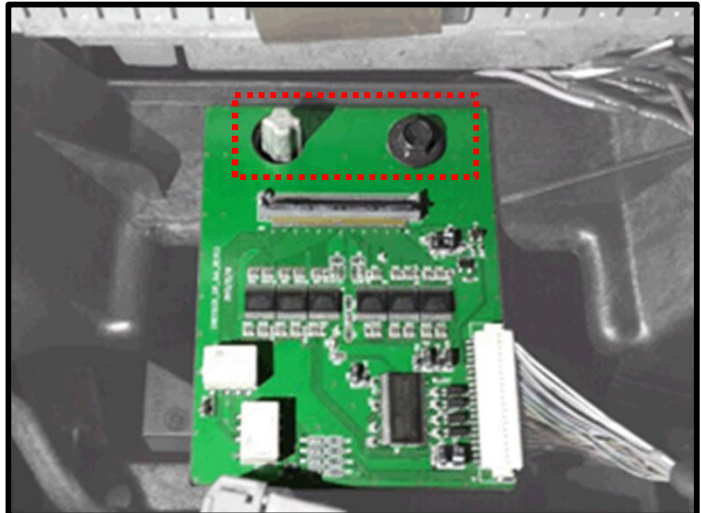
j



k



l

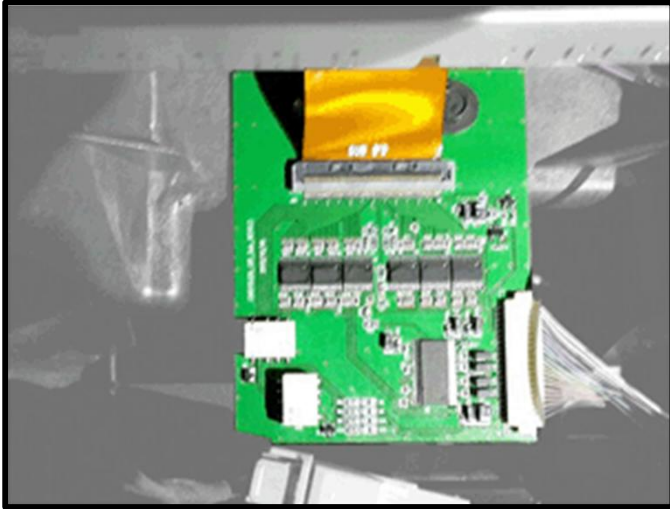


GU Electronic

9. Install Manual

3. Installation

③



GU Electronic

10. Q & A

FAQ

1. Not possible to switch mode
 - Check connection of OSD Key pad wire
 - Check CAN connection
2. Display wrong size of picture
 - Check Dip s/w setting
3. Display black screen in OEM mode
 - Check connection of LVDS/LCD cable
4. Not possible to switch to rear screen
 - Check the packing setting (OSD Menu – option – RearCam-Det)

Caution

1. The device must not be installed in where it interferes driving
(close to brake pedal, steering wheel, airbag etc.)
2. LVDS cable must be connected correctly according to the manual
3. Insulate the end of wire by using electrical tape
4. The installation should be done by expert
5. GU electronic does not take any responsibility for any problem caused by wrong installation
6. How to distinguish between CIP model and CTP model.



CTP system : ex) CHRYSLER 300C 2011~2015
DODGE Journey 2011~
FIAT Freemont 2013~
Maserati Quattroporte 2014~2016
Maserati Ghibli 2014~2016



CIP system : ex) 2014 JEEP Grand Cherokee



GU Electronic