

INFINITI Q50 TDC2

- DATE : 2020.08.29



GU ELECTRONIC

Index

1. Main Spec
2. Block Diagram
3. Dimension
4. External Appearance
5. Connector Pin Assignment
6. Product Composition
7. DIP S/W Setting
8. Mode Change
9. Install Manual
10. Q & A

1. Main Spec.

1. Input Spec. (MULTI VIDEO INTERFACE)

- 1 x Digital RGB Input (Carplay System source)
- 1 x CVBS(REAR CAMERA) Input. (Rear camera source)
- 1 x CVBS(Composite Video) Input. (Front camera source)

2. Output Spec.

- 1 x Vertual Analog Touch (Navigation System source)
- 1 x Uart Digital Touch (Navigation System source)
- 1 x LVDS Output (LCD Operation)

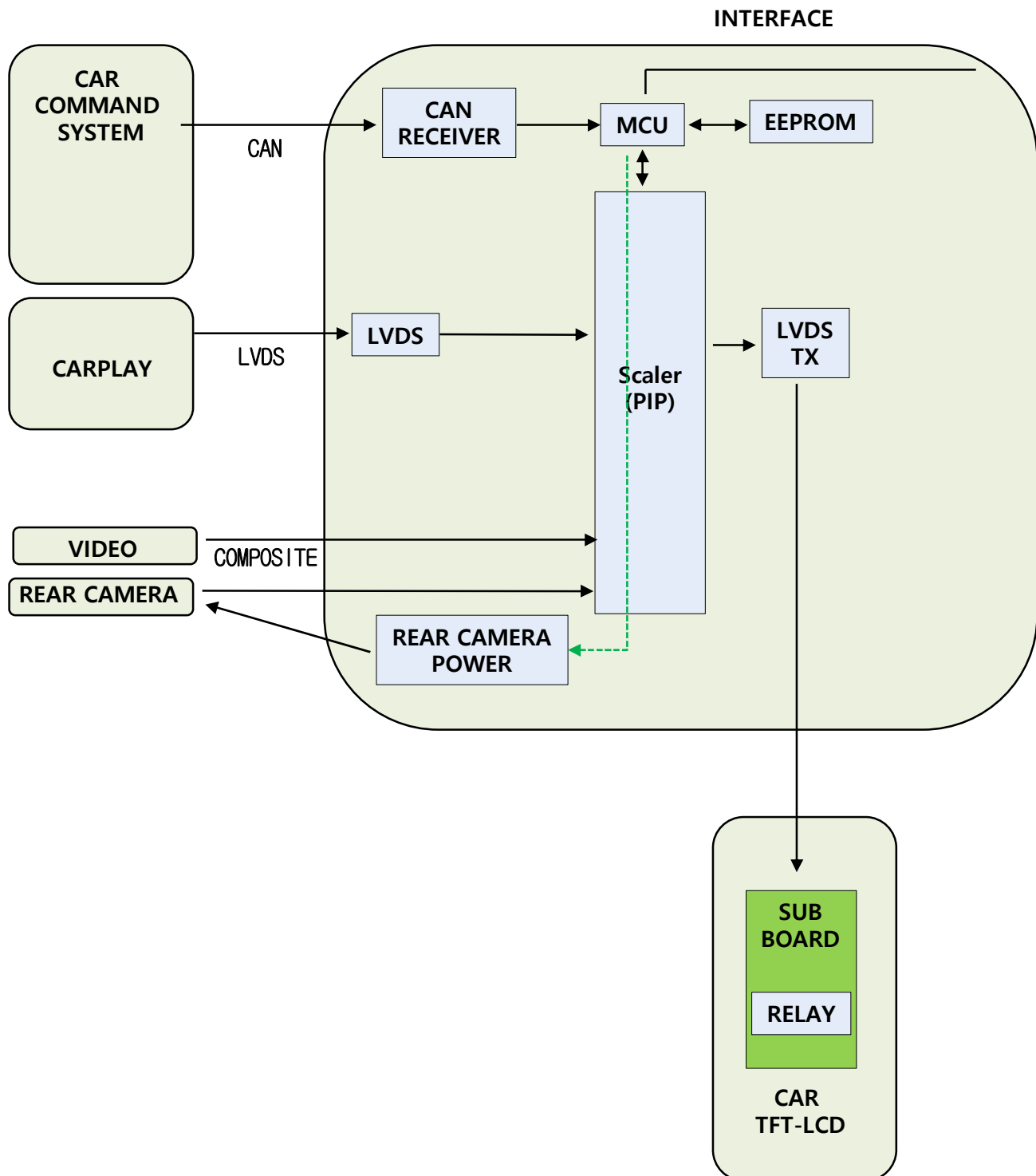
3. Power Spec.

- Input Power : 8VDC ~ 24VDC
- Consumption Power : 12Watt, Max

4. Switch Input mode

- Possible to select CAR model while switching mode by DIP S/W
- By button on the Commander in the car via CAN

2. Block Diagram



3. Dimension

159mm * 83mm * 22mm

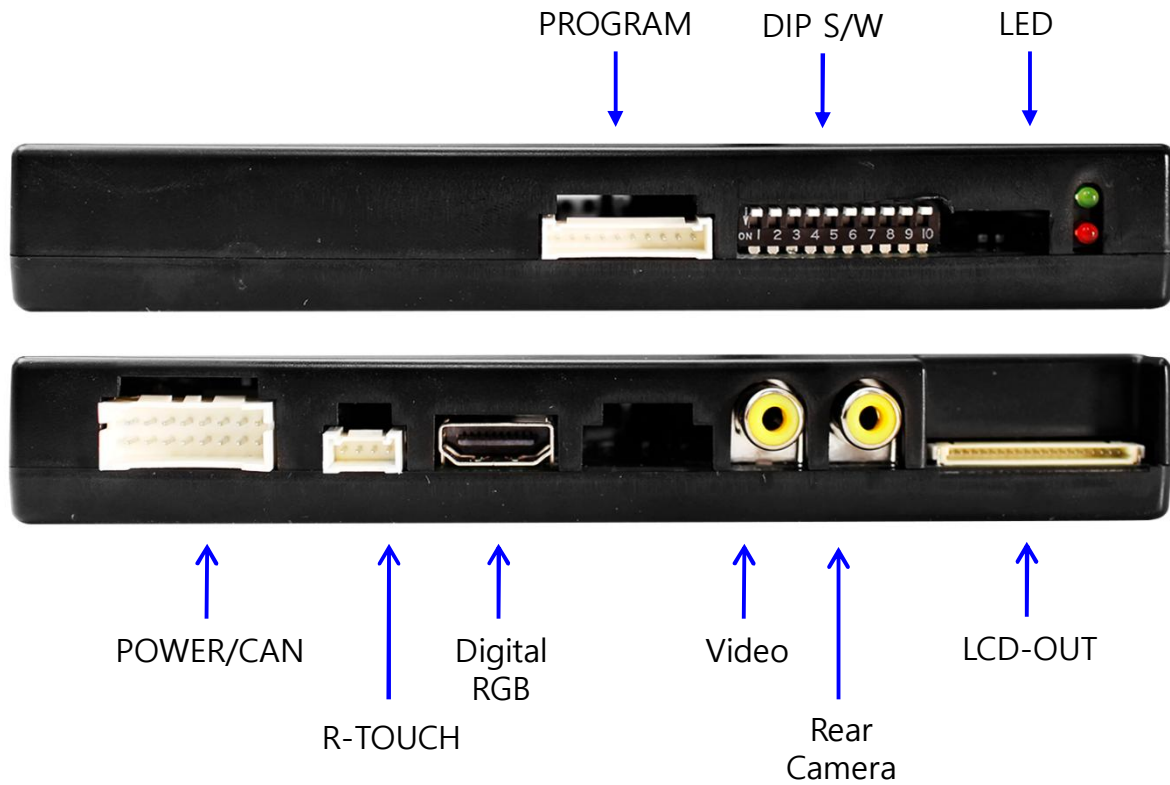


* This can change under manufacturer's circumstance

4. External Appearance



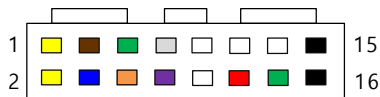
4. External Appearance



5. Connector Pin Assignment

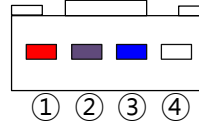


*POWER Connect



- | | |
|---------------------|--------------------|
| 1. ACC (Yellow) | 9. N.C |
| 2. ACC (Yellow) | 10. N.C |
| 3. Rear-DET (Brown) | 11. N.C |
| 4. N.C | 12. Rear-VCC (Red) |
| 5. CAN-L (Green) | 13. N.C |
| 6. CAN-H (Orange) | 14. Mode (Green) |
| 7. CAN-L (White) | 15. GND (Black) |
| 8. CAN-H (Purple) | 16. GND (Black) |

*Touch Connect

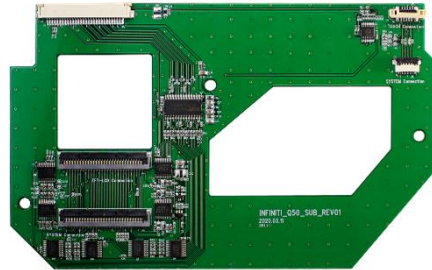


- | |
|------|
| ① Y- |
| ② X- |
| ③ Y+ |
| ④ X+ |

6. Product Composition



Interface 1 EA

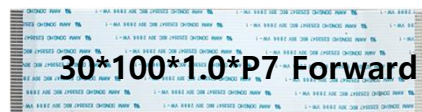


SUB Board 1 EA

 **10*100*0.5*P6 Reverse**



60*100*0.5*P6 Reverse



30*100*1.0*P7 Forward



Power Cable 1 EA

FFC Cable 3 EA



LVDS Extension Board 1 EA



LVDS Cable(800mm) 1 EA



LVDS Cable(800mm) 1 EA

6. Product Composition

* AUX TO USB Sales(option)



AUX TO USB 1 EA

6. Product Composition

* CarPlay Set Sales(option) – KPLAY



Interface 1 EA



AUX Cable 1 EA



Power Cable 1 EA



HDMI Cable 1 EA



Bluetooth / Wifi Antenna 2EA



Microphone 1 EA

6. Product Composition

* CarPlay(NV17) Set Sales(option)



CarPlay Main 1 EA



AUX Cable 1 EA



Power Cable 1 EA



HDMI Cable 1 EA



Microphone 1 EA

7. DIP S/W Setting

* ON : DOWN , OFF : UP

* DIP S/W Example

PIN	FUNCTION	DIP S/W Selection
1	NAVIGATION	ON : Not Used OFF : Used
2	VIDEO	ON : Not Used OFF : Used
3	REAR TYPE	ON : OEM OFF : External
4	REAR DETECT	ON : Wire(Vehicles without a genuine 360 around view) OFF : CAN(Vehicles with a genuine 360 around view)
5	NAVI type SEL	Down Picture
6		
7		
8	CAR type SEL	Right Picture
9		
10		



INFINITI Q50/QX50



KPLAY



NETPLAY



NV17



ROIK10



GU Electronic

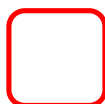
8. Mode Change

Mode Change Button



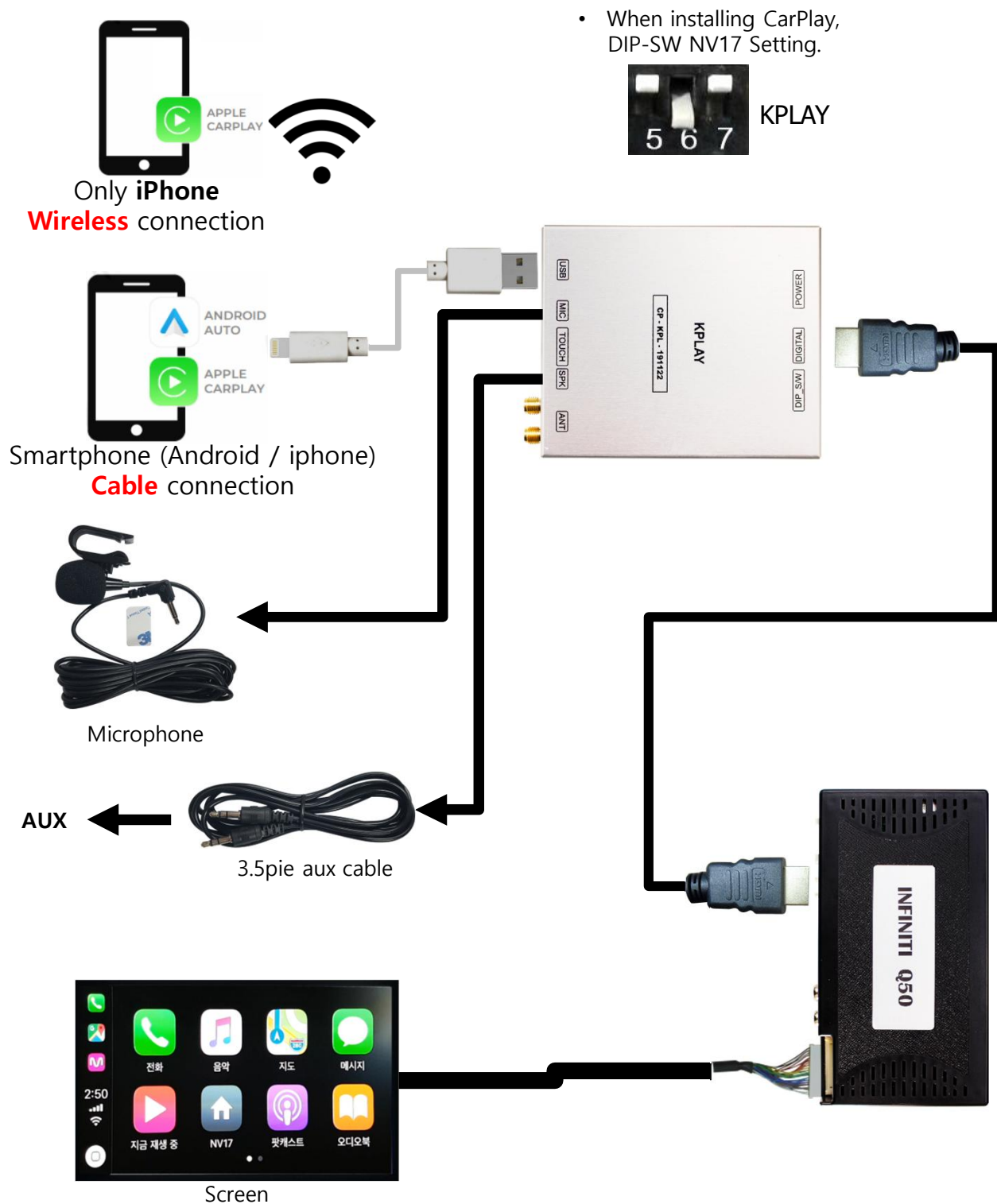
Carplay mode TRACK UP

Carplay mode TRACK DOWN

 Mode change to press 1 seconds
OEM screen change to press short

9. Install Manual

1. Installation CarPlay - KPLAY

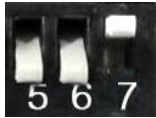


GU Electronic

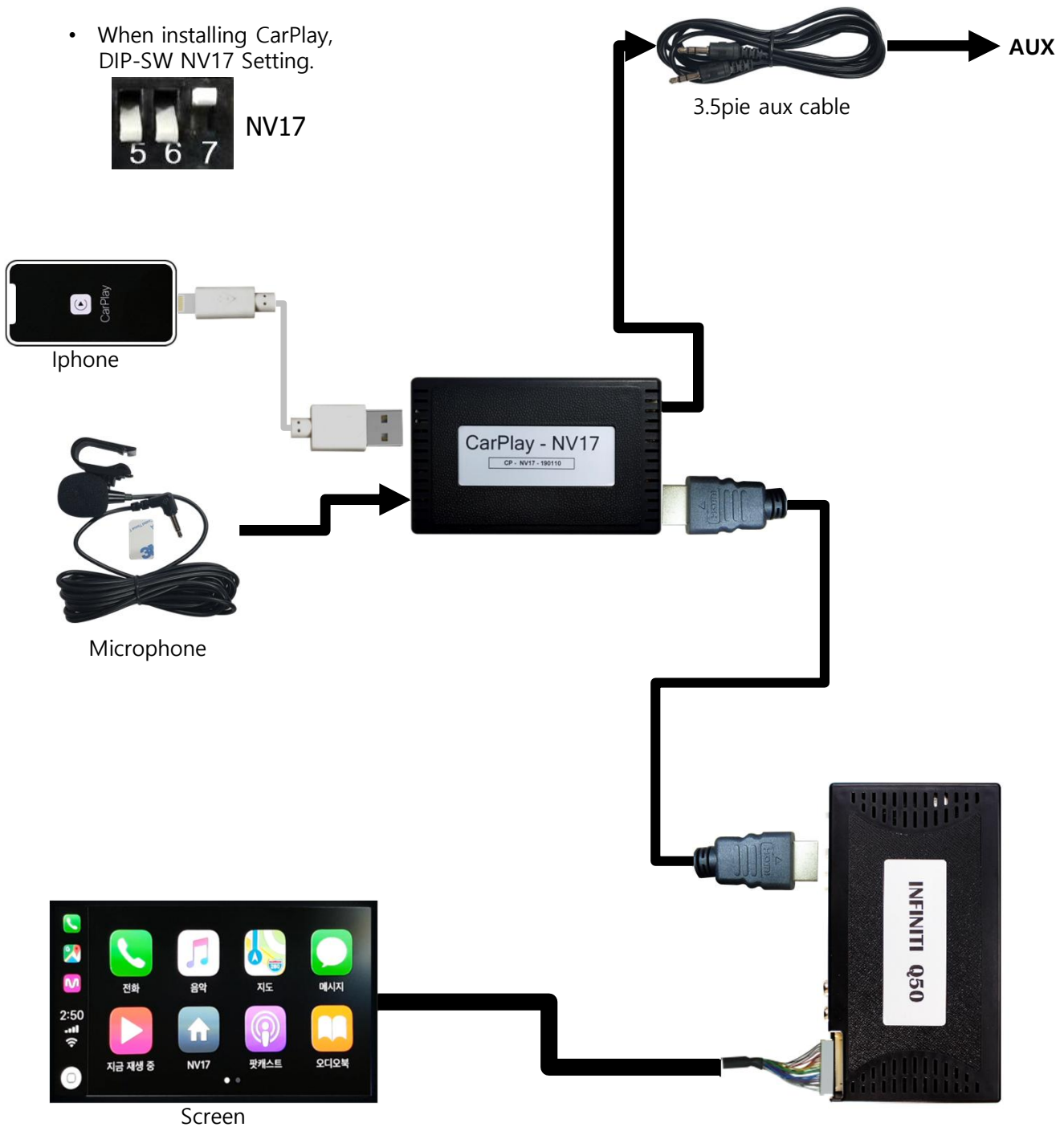
9. Install Manual

2. Installation CarPlay – NV17

- When installing CarPlay, DIP-SW NV17 Setting.

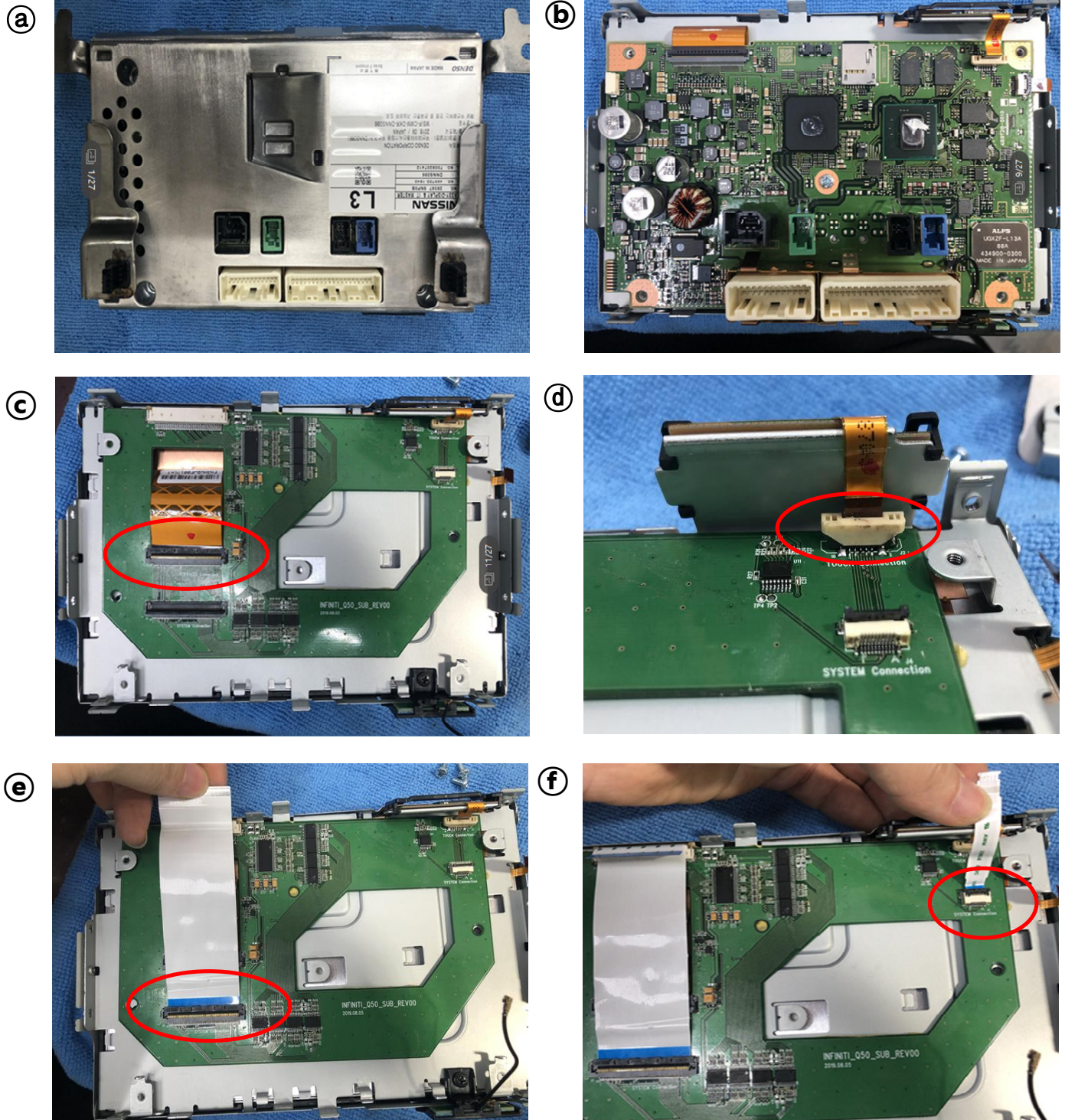


NV17



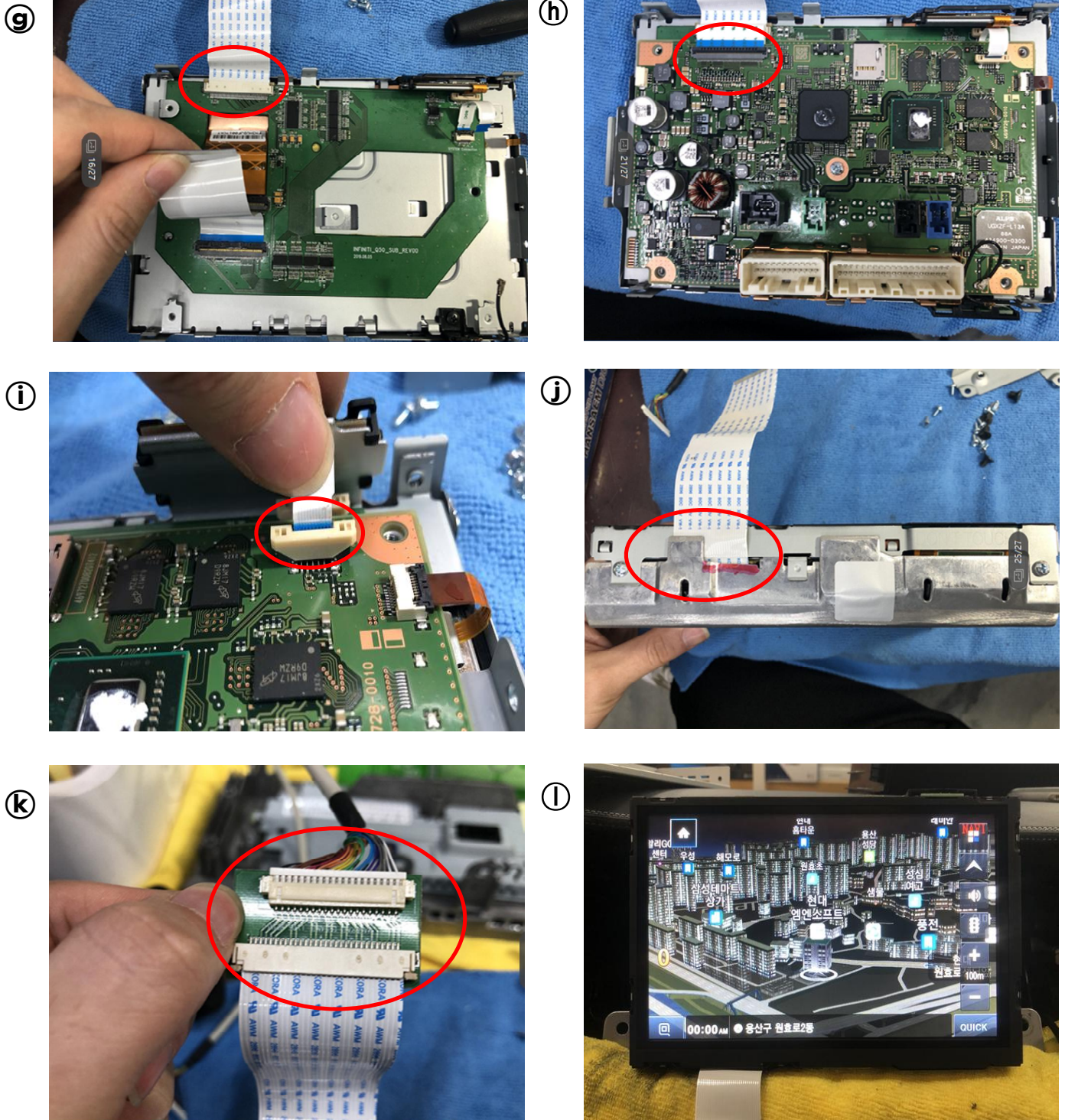
9. Install Manual

3. Installation



9. Install Manual

3. Installation

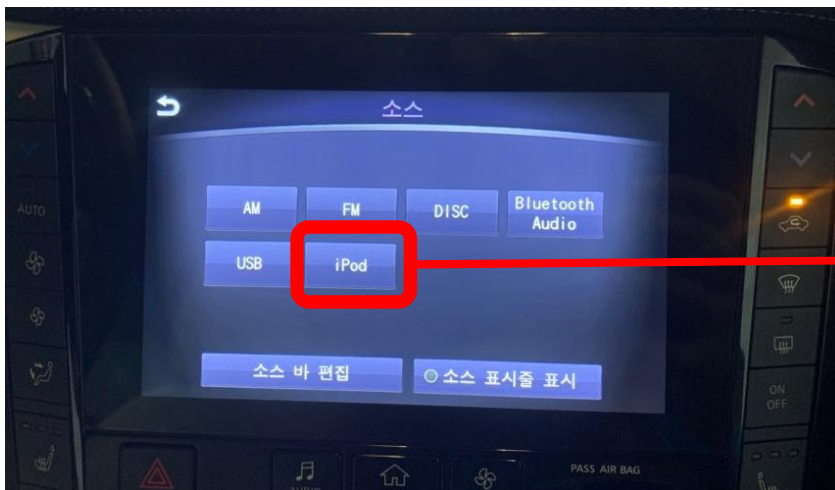


9. Install Manual

4. AUX TO USB install



AUX TO USB
install



iPod execute !

10. Q & A

FAQ

1. Not possible to switch mode
 - Check connection of OSD Key pad wire
 - Check CAN connection
2. Display wrong size of picture
 - Check Dip s/w setting
3. Display black screen in OEM mode
 - Check connection of LVDS/LCD cable
4. Not possible to switch to rear screen
 - Check the packing setting (OSD Menu – option – RearCam-Det)

Caution

1. The device must not be installed in where it interferes driving
(close to brake pedal, steering wheel, airbag etc.)
2. LVDS cable must be connected correctly according to the manual
3. Insulate the end of wire by using electrical tape
4. The installation should be done by expert
5. GU electronic does not take any responsibility for any problem caused by wrong installation
- .