

Cadillac Manual

- Escalade 2016~

- CTS 2014~

- MODEL : ML-PAS-190402

- DATE : 2020.04.06

Index

1. Main Spec
2. Block Diagram
3. Dimension
4. External Appearance
5. Connector Pin Assignment
6. Product Composition
7. DIP S/W Setting
8. Mode Change
9. Touch Control
10. OSD(On Screen Display) Control
11. Install Manual
12. Q & A

1. Main Spec.

1. Input Spec. (MULTI VIDEO INTERFACE)

- 1 x Digital RGB Input (Navigation System output)
- 1 x Analog RGB Input (Navigation System output)
- 1 x CVBS(REAR CAMERA) Input. (Rear camera source)
- 1 x CVBS(FRONT CAMERA) Input. (Front camera source)
- 1 x LVDS Input. (Car Command System)

2. Output Spec.

- 1 x LVDS Output (LCD Operation)
- 1 x Virtual Analog Touch (Navigation System source)
- 1 x Uart Digital Touch (Navigation System source)

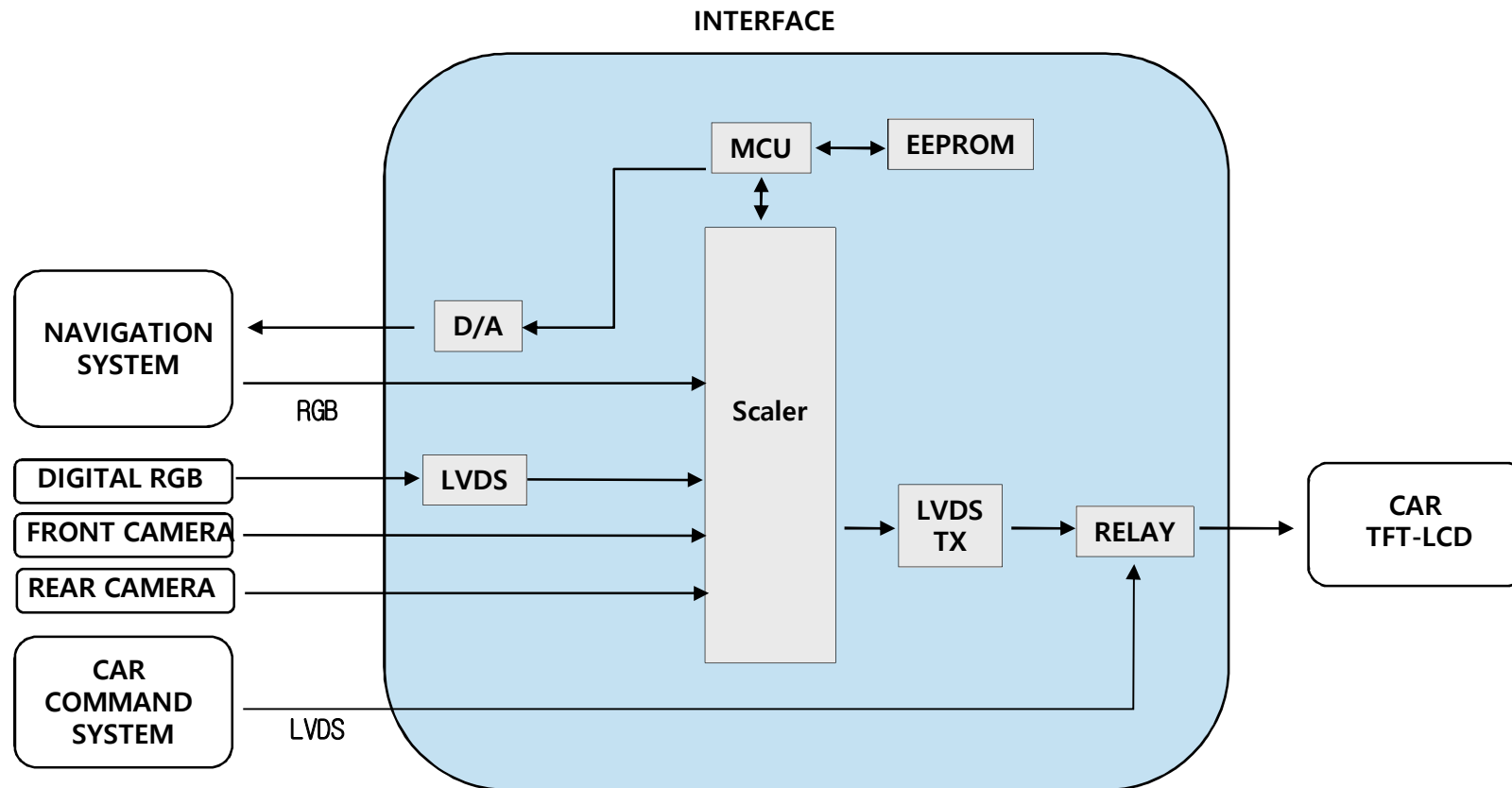
3. Power Spec.

- Input Power : 8VDC ~ 24VDC
- Consumption Power : 12Watt, Max

4. Switch Input mode

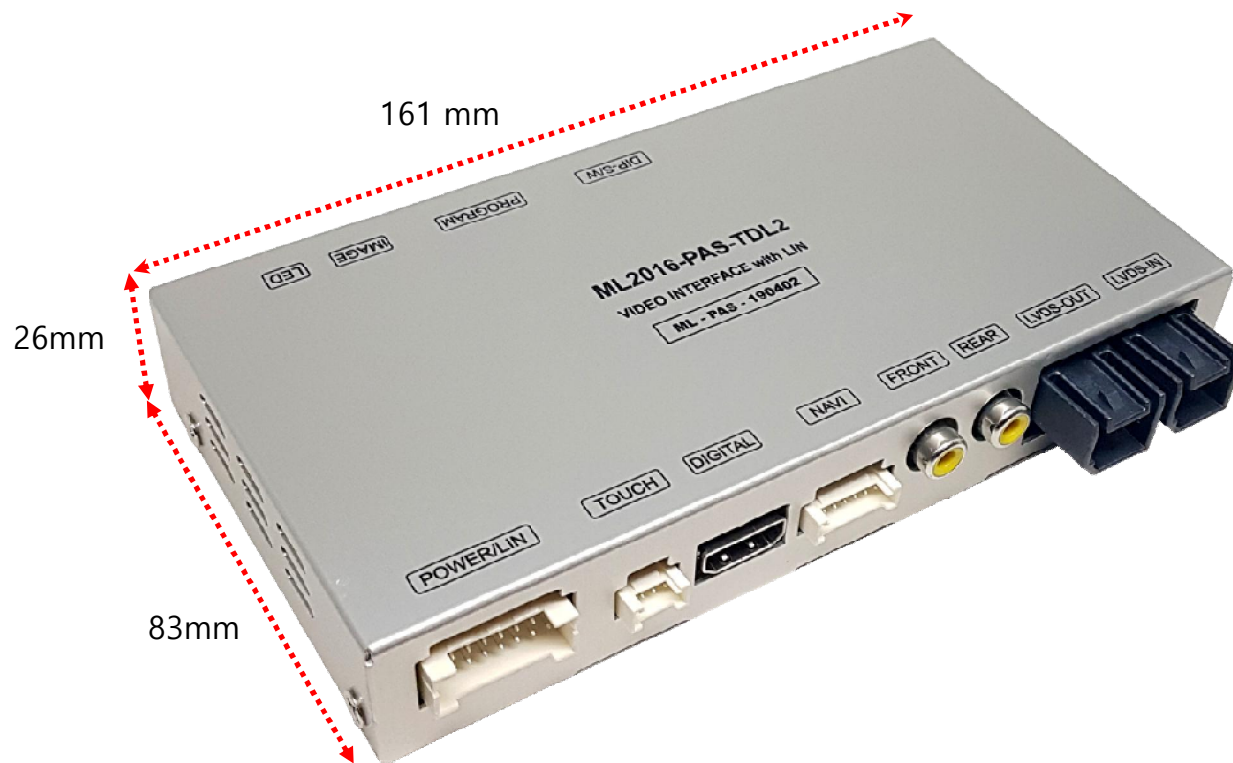
- Possible to select CAR model while switching mode by DIP S/W
- By button on the Commander in the car via CAN

2. Block Diagram



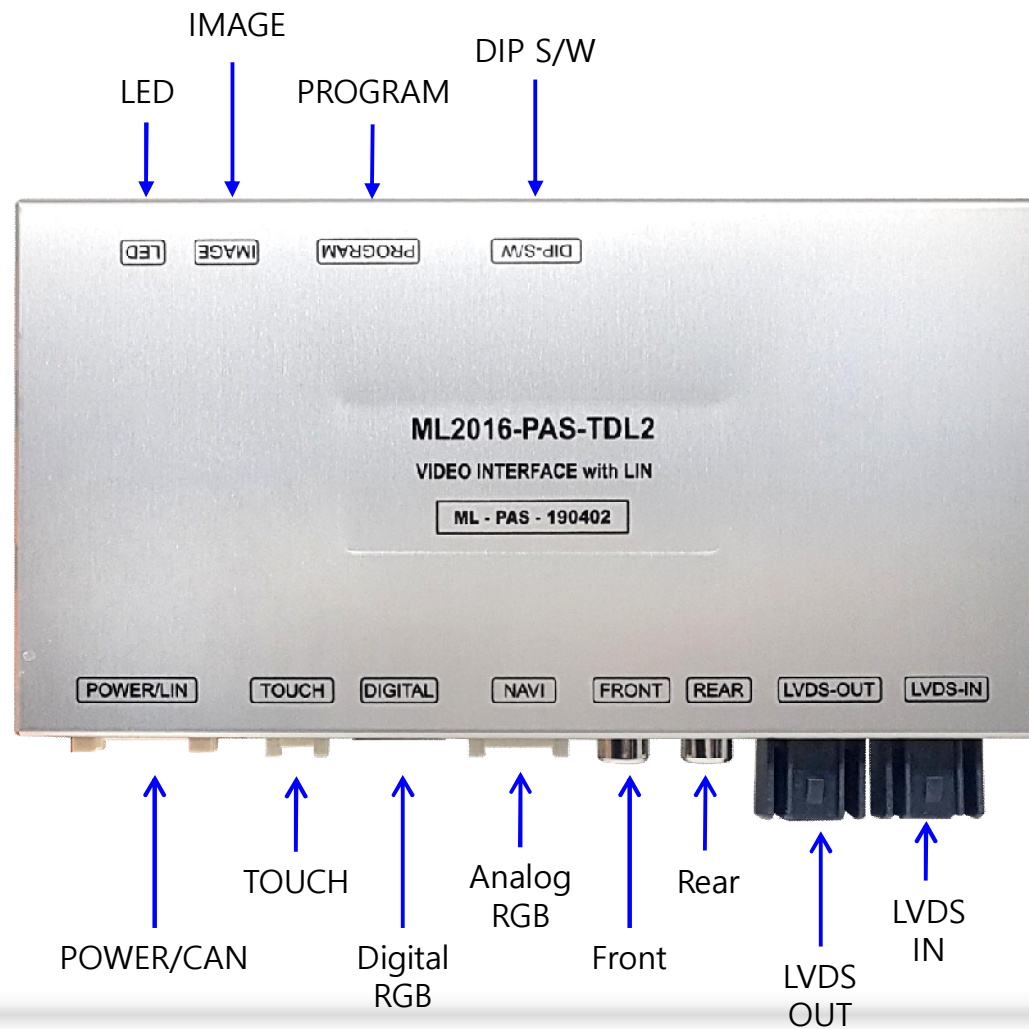
3. Dimension

161mm * 83mm * 26mm

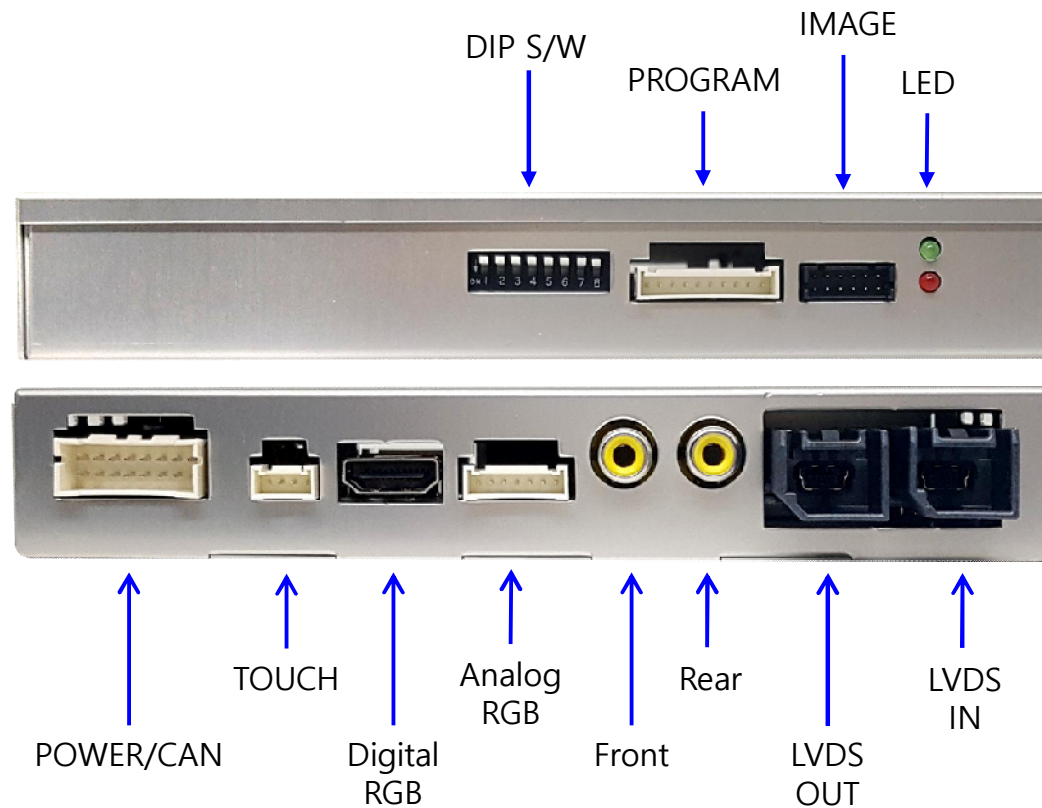


* This can change under manufacturer's circumstance

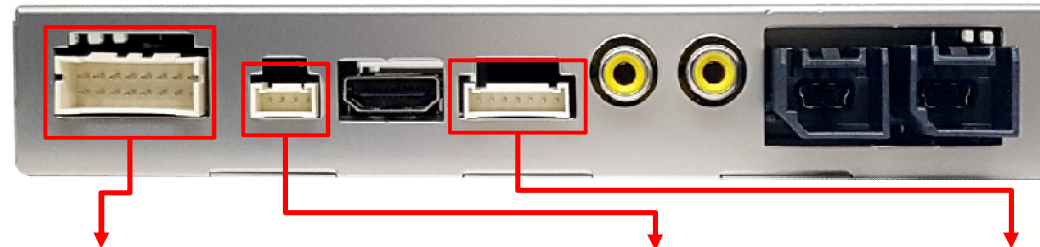
4. External Appearance



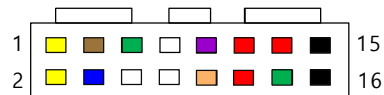
4. External Appearance



5. Connector Pin Assignment

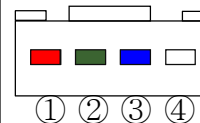


*POWER Connect



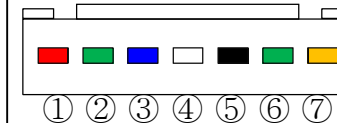
- | | |
|---------------------|---------------------|
| 1. Battery (Yellow) | 9. LIN (Purple) |
| 2. Battery (Yellow) | 10. SWC (Orange) |
| 3. Rear-DET (Brown) | 11. ACC (Red) |
| 4. Front-DET (Blue) | 12. Rear-VCC (Red) |
| 5. LIN-IN (Green) | 13. Front-VCC (Red) |
| 6. N.C | 14. Mode (Green) |
| 7. LIN-OUT (White) | 15. GND (Black) |
| 8. N.C | 16. GND (Black) |

*Touch Connect



- ① Y-
② X-
③ Y+
④ X+

*NAVI Connect



- ① R DATA (Red)
② G DATA (Green)
③ B DATA (Blue)
④ SYNC (White)
⑤ GND (Black)
⑥ DVB-T IR (Green)
⑦ DVD IR (Orange)

6. Product Composition



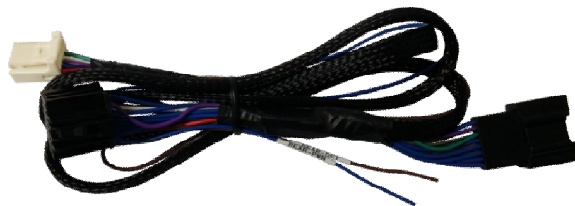
Interface 1 EA



OSD Board 1 EA



LVDS Cable 1 EA



Power Cable 1 EA



RGB NAVI Cable(7pin) 1 EA



Touch convertor Cable(KD-900) 1 EA

6. Product Composition Option

* CarPlay Set Sales(option)



Interface 1 EA



Power Cable (500mm) 1 EA



AUX Cable 1 EA



HDMI Cable 1 EA



ACC Board 1 EA



Microphone 1 EA

7. DIP S/W Setting

* ON : DOWN , OFF : UP

PIN	FUNCTION	DIP S/W Selection
1	NAVI	ON : Not Used OFF : Used
2	AV1 (DVB-T)	ON : Skipping Video OFF : Display
3	AV2 (DVD)	ON : Skipping Video OFF : Display
4	N.C	
5	N.C	
6	CAR type SEL	Right Picture
7		
8		

* DIP S/W Example



ESCALADE 2016~
CTS 2014~

8. Mode Change

* 화면 전환 방법



MENU	ChgMode Opt	NAVI
Config	FrontCam-Det	ExtWire
Option	FrontCam-RcvOpt	0s
Image	AV Out	USER
Screen	B/T Call	On
Parking	ChgMode Opt	Double Long

- You can select between two methods when changing the screen by pressing HOME button.
 - Double : Press Home button twice quickly.
 - Long : Press and hold Home button.

9. Touch Control

Touch control - Calibration

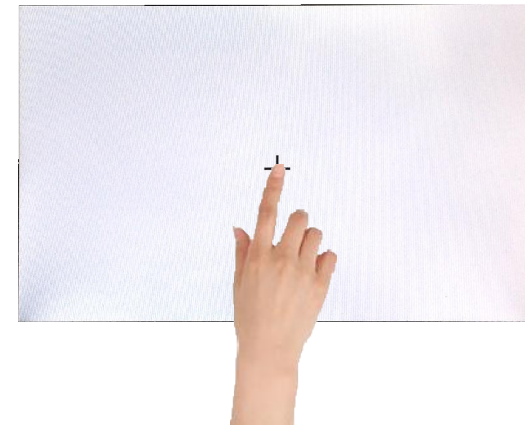


Press and hold for more than 11 seconds on NAVI, DVB-T, DVD screen.
(Note that it only works the first time after switching screens)

OR

MENU	Calibration	NAVI
OSD	Factory Reset	Execute Cancel
IR-Ctrl	Calibration	Execute Cancel
Utility	Version	FDSHOOKRX-180112

OSD menu -> Utility -> Calibration



+ Touch according to the shape coordinates.

9. Touch Control

DVB-T/DVD Control

DVB-T

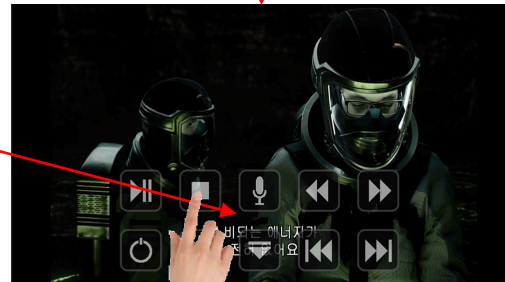


Press Touch(Anywhere)



Press Icon

DVD



10. OSD(On Screen Display) Control

OSD Control Board



MENU	When there is no OSD screen, pressing OSD ON When OSD screen is displayed, press OSD EXITT
SEL	Item Selection, Value Selection
UP	Item up Increase selected value
DOWN	Item down Decrease selected value

Mode State		
MENU	Option	
Config	RearCam-Type	ExtDevice
Option	RearCam-Power	Auto
Image	RearCam-Det	GEAR
Screen	AV Mode	Off
Parking	FrontCam-Type	ExtDevice

First Menu Second Menu Third Menu

10. OSD(On Screen Display) Control

OSD Option

First Menu	Second Menu	Third Menu	Description
Option	NAVI COM	HMS FINE :	Set up manufacturer of woodworking device for UART Touch use
		OFF	Disable feature
	RearCam-Type	OEM	Original Camera
		ExtDevice	Equipped with external camera
	RearCam-Power	ON	+ 12V continuous supply
		AUTO	+ 12V supply only in Rear camera mode
		OFF	+ 12V off
	RearCam-Det	PDC	Detected by CAN - It is operated by parking sensor
		GEAR	Detected by CAN - It works on reverse signal.
		WIRE	Detected by Rear-Det Wire
	FrontCam-Type	OEM	Original Camera
		ExtDevice	Equipped with external camera

MENU	RearCam-Type	NAVI
Config	RearCam-Type	OEM
Option	RearCam-Power	Auto
Image	RearCam-Det	GEAR
Screen	AV Mode	Off
Parking	FrontCam-Type	ExtDevice

10. OSD(On Screen Display) Control

OSD Option

First Menu	Second Menu	Third Menu	Description
Option	FrontCam-Power	ON	+ 12V continuous supply
		AUTO	+ 12V supply only in Front camera mode
		OFF	+ 12V off
	FrontCam-Det	CAN	Detected by CAN
		WIRE	Detected by Front-Det Wire
	FrontCam-RcvOpt	ON	After RearCam shows FrontCam and returns to previous state
		OFF	Disable feature
	B/T Call	ON	Switch to OEM screen when you call
		OFF	Disable feature
	ChgMode Opt	Double	Press "HOME" button twice to switch screens
		Long	Press and hold the "HOME" button to switch screens

MENU	FrontCam-Power	NAVI
Config	FrontCam-Power	Auto
Option	FrontCam-Det	ExtWire
Image	FrontCam-RcvOpt	0s
Screen	SteeringWheelBtn	Left
Parking	UI DVB-T(DMB)	On

10. OSD(On Screen Display) Control

OSD Option

First Menu	Second Menu	Third Menu	Description
Option	Key_Off	ON	Switch to OEM screen when key off
		OFF	Disable feature
	Reset	Execute	Option Menu all Reset

MENU	UI DVD	NAVI
Config	UI DVD	On
Option	ScrChg-Call	Off
Image	ScrChg-Climate	Off
Screen	ScrChg-Audio-Vol	Off
Parking	NAVI COM	Off

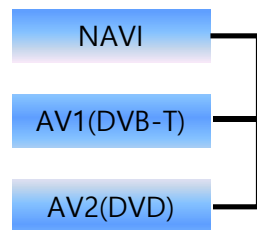
MENU	Reset	NAVI
Config	Reset	Execute Cancel
Option		
Image		
Screen		
Parking		

8. OSD(On Screen Display) Control

* Bluetooth Screen switching method

MENU	B/T Call		NAVI
Config	FrontCam-Det	ExtWire	
Option	FrontCam-RcvOpt	<input type="checkbox"/> Os	
Image	AV Out	USER	
Screen	B/T Call	On	Off
Parking	ChgMode Opt	Double	

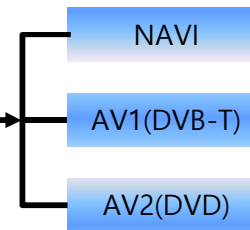
Disable Bluetooth Phone



Call

MENU	B/T Call		NAVI
Config	FrontCam-Det	ExtWire	
Option	FrontCam-RcvOpt	<input type="checkbox"/> Os	
Image	AV Out	USER	
Screen	B/T Call	On	Off
Parking	ChgMode Opt	Double	

Bluetooth Phone Usage



Ending

10. OSD(On Screen Display) Control

OSD Option -> FrontCam-RcvOpt

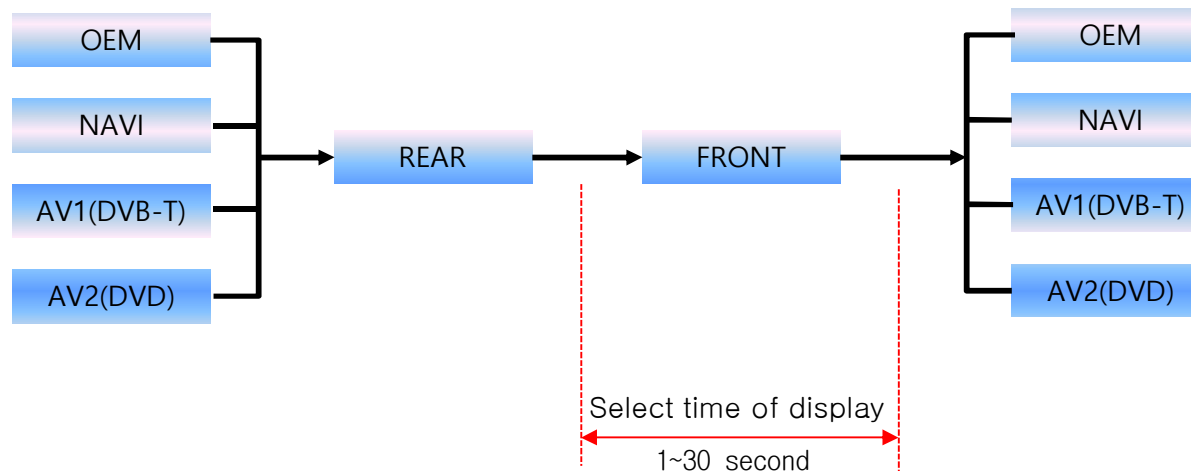
Front Camera Auto Mode

0 second = FrontCam-RcvOpt menu OFF

1~30 second = FrontCam-RcvOpt menu ON & time control

MENU	FrontCam-RcvOpt	NAVI
Config	FrontCam-RcvOpt	0s
Option	SteeringWheelBtn	On
Image	UI DVB-T(DMB)	On
Screen	UI DVD	On
Parking	ScrChg-Climate	On

MENU	FrontCam-RcvOpt	NAVI
Config	FrontCam-RcvOpt	30s
Option	SteeringWheelBtn	On
Image	UI DVB-T(DMB)	On
Screen	UI DVD	On
Parking	ScrChg-Climate	On



10. OSD(On Screen Display) Control

NAVI-RGB menu

First Menu	Second Menu	Third Menu	Action
Image	Brightness		Adjust the value of brightness
	Contrast		Adjust the value of contrast
	Color-RED		Adjust the value of RED
	Color-GREEN		Adjust the value of GREEN
	Color-BLUE		Adjust the value of BLUE
	Reset	Excute	Option Menu all Reset



<< Brightness >>



<< Contrast >>

DVD,DVB-T(DMB),NAVI-AV,REAR,FRONT menu

First Menu	Second Menu	Third Menu	Action
Image	Brightness		Adjust the value of brightness
	Contrast		Adjust the value of contrast
	Saturation		Adjust the value of Saturation
	Hue		Adjust the value of Hue
	Sharpness		Adjust the value of Sharpness
	Reset	Excute	Option Menu all Reset



<< Saturation >>

10. OSD(On Screen Display) Control

OSD – Screen Menu

First Menu	Second Menu	Third Menu	Description
Screen	Horizontal		Output screen horizontal movement
	Vertical		Output screen vertical movement
	Scale X Up		Reduce / increase output screen width
	Scale X Down		
	Scale Y Up		Reduce / Increase Output Screen Height
	Scale Y Down		
	Reset		Screen menu all reset

MENU	Horizontal	NAVI
Config	Horizontal	50
Option	Vertical	50
Image	Scale X Up	50
Screen	Scale X Down	50
Parking	Scale Y Up	50

10. OSD(On Screen Display) Control

OSD – Parking Menu

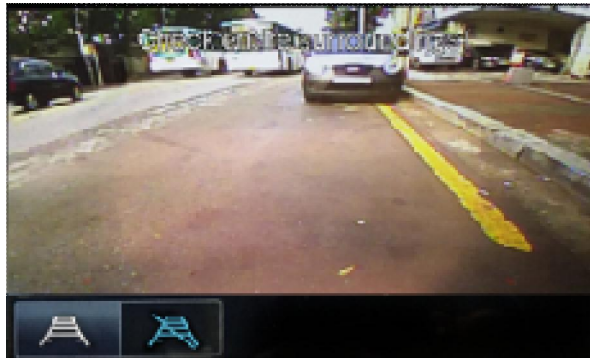
First Menu	Second Menu	Third Menu	Description
Parking	OPS Display	ON	Show OPS
		OFF	Do not show OPS
	Warnings Lang		Set warning text language
	Horizontal		Moving a parking line horizontally
	Vertical		Moving a parking line vertically
	Transparency		Parking line transparency
	Reset		Parking menu all reset

9. OSD(On Screen Display) Control

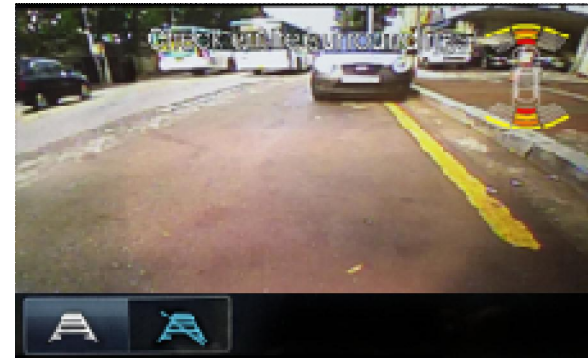
OSD Parking – OPS Display On / Off

MENU	OPS Display		REAR
Config	OPS Display	On	Off
Option	Warnings Lang	English	
Image	Horizontal	<div><div></div></div>	50
Screen	Vertical	<div><div></div></div>	50
Parking	Reset	Execute	Cancel

MENU	OPS Display		REAR
Config	OPS Display	On	Off
Option	Warnings Lang	English	
Image	Horizontal	<div><div></div></div>	50
Screen	Vertical	<div><div></div></div>	50
Parking	Reset	Execute	Cancel



OPS-PDC ON Screen



OPS-PDC OFF Screen

* Even if you do not have a sensor, you can not see the parking sensor in the above figure even if you control the OSD board.

10. OSD(On Screen Display) Control

OSD Parking – Guide line On / Off



Parking Line ON Screen



Parking Line OFF Screen

10. OSD(On Screen Display) Control

OSD Parking – Change warning language

MENU	Parking / Warnings Lang	DEAR
Config	OPS Display	English
Option	Line Display	中文
Image	Warnings Lang	한국어
Screen	Horizontal	台灣
Parking	Vertical	Россия

English

Check entire surroundings!

中文

请注意车辆周围环境!

한국어

차량 주변을 전부 확인

台灣

請注意車輛周圍環境!

Россия

Следите за всем окружением автомобиля!

日本

周辺の安全を確認

10. OSD(On Screen Display) Control

OSD Parking – Adjust position of parking guide line

MENU	Parking	REAR
Config	OPS Display	Off
Option	Line Display	On
Image	Warnings Lang	English
Screen	Horizontal	50
Parking	Vertical	50

Possible to adjust the position of parking guide line by Keypad in Horizontal / Vertical menu

※ Pressing this Horizontal / Vertical menu, The OSD screen automatically disappears. Please adjust from the parking line Screen.



Press "UP" button

Press "MENU" button



Press "SEL" button

Press "DOWN" button

10. OSD(On Screen Display) Control

OSD – OSD Menu

First Menu	Second Menu	Third Menu	Description
OSD	Horizontal	<i>value</i>	OSD Menu Horizontal Shift
	Vertical	<i>value</i>	OSD menu vertical Shift
	Display Time	<i>value</i>	OSD Menu Display Time (in seconds)
	Transparency	<i>value</i>	OSD menu transparency
	Language		OSD menu display language
	Reset	Execute	Initialize OSD settings

MENU	Horizontal	DVB-T
OSD	Horizontal	50
IR-Ctrl	Vertical	50
Utility	Display Time	10s
	Transparency	30
	Language	English

MENU	Reset	DVB-T
OSD	Reset	Execute Cancel
IR-Ctrl		
Utility		

10. OSD(On Screen Display) Control

* IR learning function



* In order to work with the IR learning function, a separate IR cable is required.

MENU	IR-Ctrl / DVB-T(DMB)	NAVI
OSD	DVB-T(DMB)	Sel Learn Cancel
IR-Ctrl	DVD	Sys
Utility		

1. In DVB-T / DVD menu, select User in Sys (OSD list) or User (learned contents).
2. Select Learn from the OSD menu.



MENU	IR-Ctrl / DVB-T(DMB)	NAVI
OSD	All-Clear	
IR-Ctrl	POWER	----
Utility	SCAN	----
	CH+	----
	CH-	----

3. Before using IR learning function, select All-Clear to delete existing stored data.



MENU	IR-Ctrl / DVB-T(DMB)	DVB-T
OSD	New Code: ----	
IR-Ctrl	Cfm Code: ----	
Utility		
	Save	Clr Cancel

4. Press the remote control button to be used in each ICON once in New Code, press once again in Cfm Code to confirm it is the same and save it.

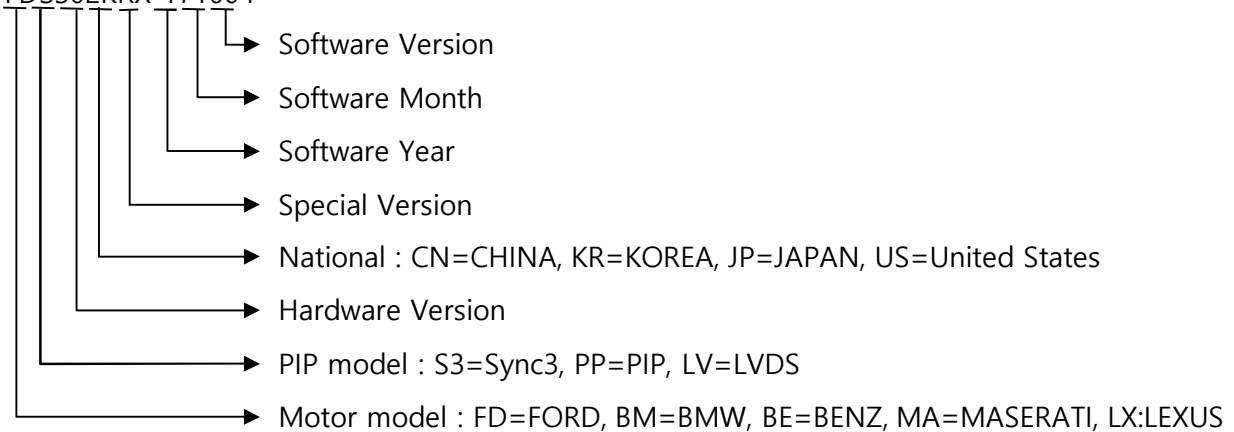
10. OSD(On Screen Display) Control

OSD Utility

First Menu	Second Menu	Third Menu	Description
Utility	Factory Reset	Execute	Initialize all settings
	Calibration	Execute	Run Calibration mode
	Version		FDS302KRX-171004 (Check for future upgrades)

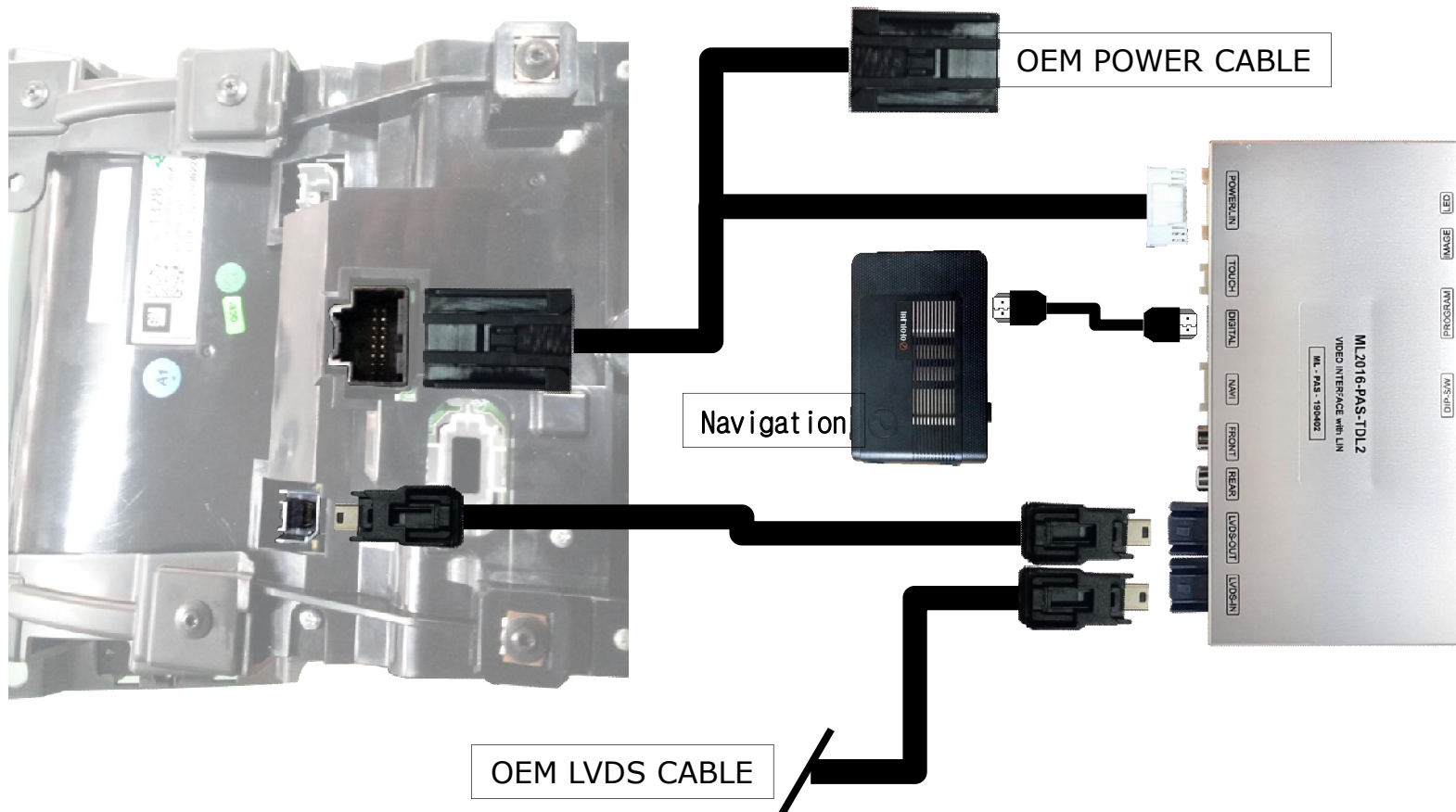
MENU	Utility	NAVI
OSD	Factory Reset	Execute Cancel
IR-Ctrl	Calibration	Execute Cancel
Utility	Version	FDS302KRX-171004

Last Source : FDS302KRX-171004



11. Install Manual

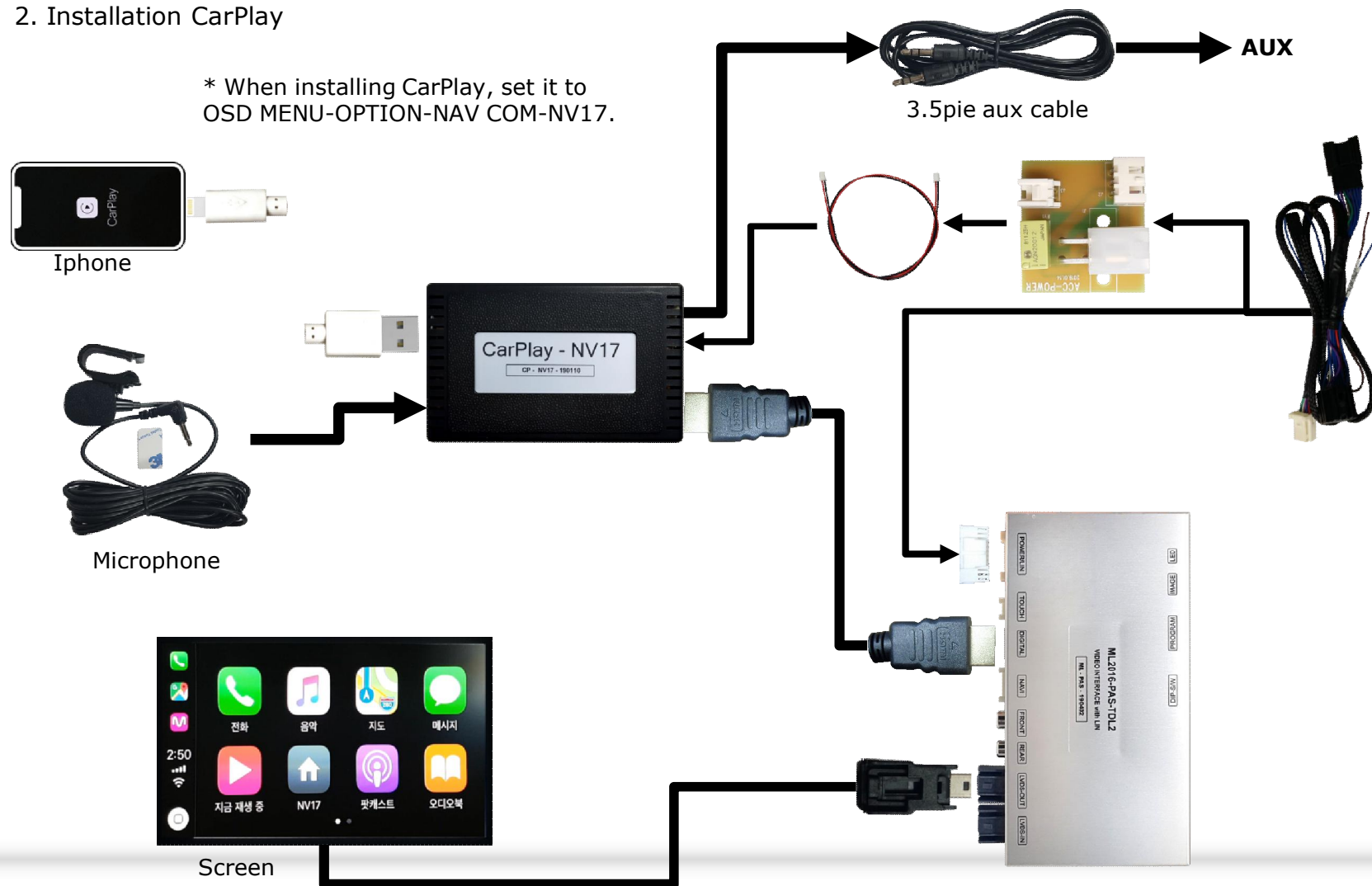
1. Installation LVDS connection



11. Install Manual

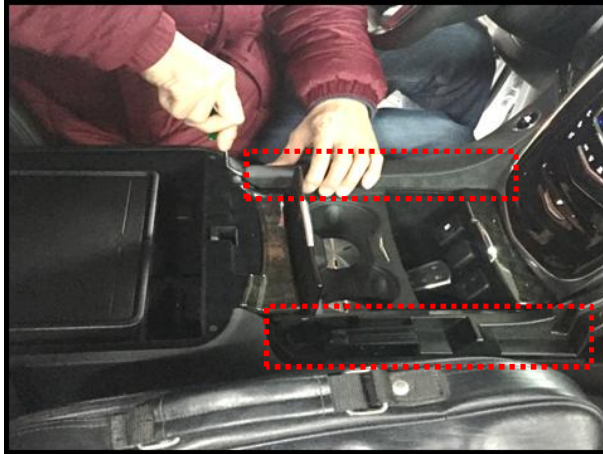
2. Installation CarPlay

* When installing CarPlay, set it to
OSD MENU-OPTION-NAV COM-NV17.



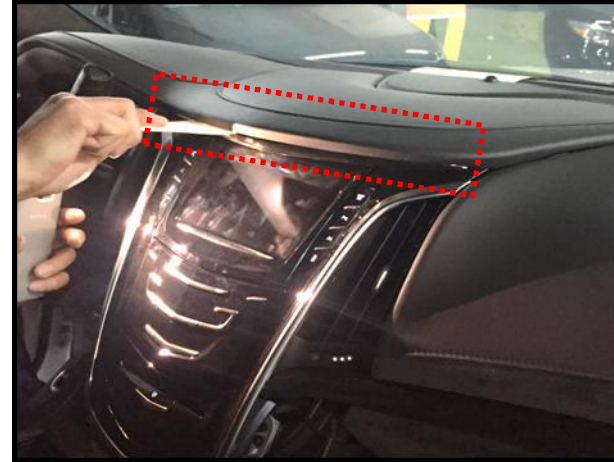
11. Install Manual

㉠

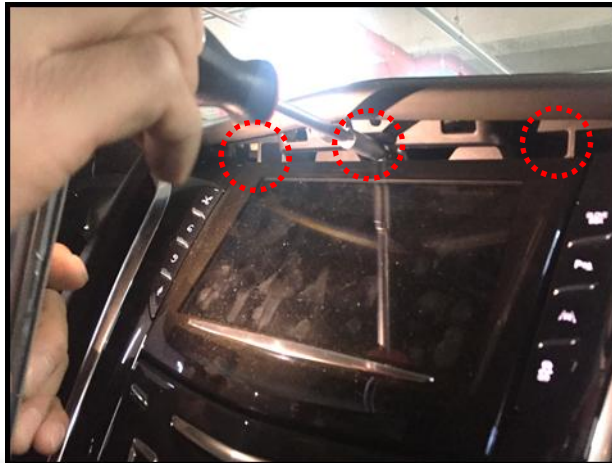


Back Cover 탈착

㉡



㉢



12. Q & A

1. Check the LED status first when interface failure..
 - If there is no abnormality after the power is applied, the green LED flashes in units of 1 second.
 - If the red LED flashes for 1 second, there is no.
 - If the red LED is on continuously, the interface itself is bad.
 - If nothing turns on, check that the power and CAN signals are properly connected
2. Q : When the screen turns black
A : LVDS cable itself is bad or bad contact.
3. If you find any symptoms with these symptoms, please contact your distributor

.